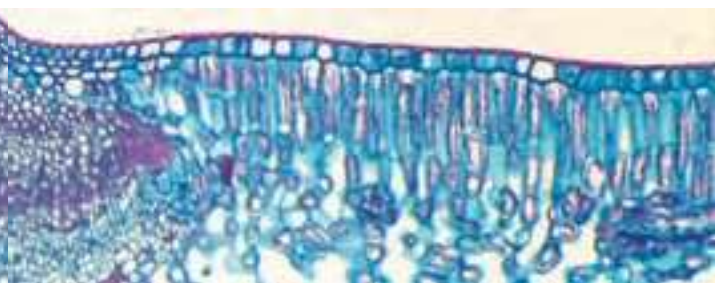


Microscope Slides



Contents

Introductory Slides & Sets	534
Viruses/Prokaryotes Slides & Sets.	538
Protozoa Slides & Sets	541
Fungi Slides & Sets.	544
Plant Slides & Sets	546
Animal Slides & Sets.	554
Genetics Slides & Sets.	560
Embryology Slides & Sets.	562
Pathology Slides & Sets.	564
Histology Slides & Sets.	565

Carolina® Microscope Slides

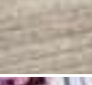



- Top quality
- Affordable
- Backed by expert technical support

Carolina—An Experienced Leader in Prepared Slides

For nearly 80 years our mission has been to provide educators with top-quality microscope slides for botany, zoology, histology, embryology, parasitology, genetics, and pathology. To fulfill that mission, we depend on our experienced, professional staff's commitment to find new and innovative ways to meet your classroom needs at an affordable cost. The result is an extensive collection of prepared slides for educators at all levels of instruction, backed by our expert technical support.



Introductory Slides & Sets

Image	Catalog No.	Name and Description	Each	12+ Each
Introductory				
	291406	Letter "e" Used to teach inversion, w.m.	\$4.30	\$4.05
	291418	Colored Threads Teaches microscope focusing, w.m.	\$5.75	\$5.50
	291442	Cork Shows general cell structure, 20 µm	\$4.65	\$4.40
	294800	Prokaryotic and Eukaryotic Cells, w.m. <i>Nostoc</i> (w.m.) and <i>Amphiuma</i> liver (sec.) mounted together for comparison	\$8.75	\$8.50
	301699	Typical Animal and Plant Cells Section of <i>Amphiuma</i> liver and lilac leaf mounted together for comparison, sec., Q	\$9.90	\$9.65
	291412	Newspaper Print w.m.	\$4.50	\$4.25
	291532	Human Straight and Curly Hair Mounted together, w.m.	\$5.10	\$4.85
	291538	Hair Comparison Human, sheep, and cat, w.m.	\$5.90	\$5.65



Beginner's Biology Slide Set Great value!

Includes the following 50 microscope slides. **Note:** *We may make substitutions as needed.*

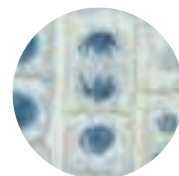
General	Plants	Planaria
Typical Plant Cells	Dicot Embryo	Sponge
Typical Animal Cells	Dicot Leaf	Spicules
Plant Mitosis	Dicot Root	Fluke
Animal Mitosis	Fern Rhizome	Roundworm
	Fern Root	Earthworm
Monerans	Fern Sporangia	Fruit Fly
Bacterial Types	Leaf Epidermis	Chick Embryo
	Monocot Flower Bud	Areolar Tissue
Protists	Monocot Stem	Bone
<i>Amoeba</i>	Moss Antheridial	Cartilage
<i>Euglena</i>	Head	Frog Blood
<i>Paramecium</i>	Moss Archegonial	Human Blood
<i>Spirogyra</i>	Head	Human Sperm
<i>Volvox</i>	Pollen Grains	Mammal Intestine
Fungi	Woody Dicot Stem	Mammal Ovary
Mushroom		Mammal Skin
<i>Penicillium</i>	Animals & Humans	Mammal Testis
<i>Rhizopus</i>	Nematode	Nervous Tissue
	<i>Cyclops</i>	Simple Cuboidal
	<i>Daphnia</i>	Epithelium
	<i>Hydra</i>	Skeletal Muscle
292336	Per set	\$408.00



Animal mitosis



Privet leaf



Plant mitosis

Key to Stains:
Q, Quadruple.



Teacher's Choice



Carolina Exclusive



Introductory Slides & Sets



Poster and slides from 291019 Exploring with a Microscope Slide and Poster Set

Exploring with a Microscope Slide and Poster Set

Students are introduced to the use of a compound microscope and simple slide-making techniques with the help of this set. Includes the poster *Exploring with a Microscope* and 10 slides selected to complement the images on the poster.

291019 Per set **\$89.00**

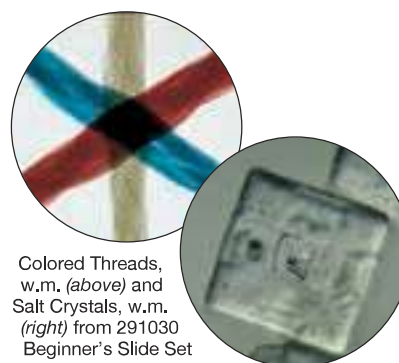


291020 Getting to Know Your Microscope Set

Getting to Know Your Microscope Set

Includes 12 microscope slides and the book *Microscopes*, which teaches the proper care and use of a microscope. Students make their own slides, using the book as a guide, then compare their slides with those included in the set. Slides are specially selected to accompany the exercises in the book.

291020 Per set **\$75.00**



Colored Threads, w.m. (above) and Salt Crystals, w.m. (right) from 291030 Beginner's Slide Set

Beginner's Slide Set

Twelve slides selected for a student's first lessons with a microscope. Includes a study guide with activities that help students learn to position objects for viewing, to adjust focus, and how to care for a microscope and slide. Contains letter "e," newspaper print, colored threads, cork, dust, cotton fibers, nylon fibers, cornstarch, salt crystals, wool fibers, silk fibers, and volcanic ash.

291030 Per set **\$59.00**



Anabaena, w.m. from 291214 Biology Slide Set

Biology Slide Set

A comprehensive set of 25 slides. Includes examples from all 5 kingdoms. For general study.

291214 Per set **\$158.00**



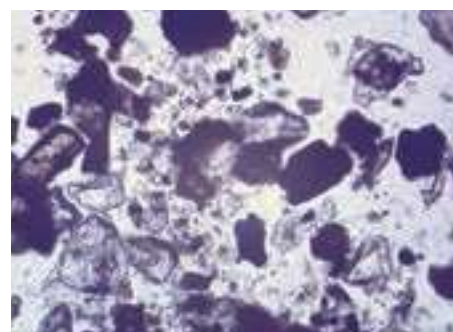
Hydra, w.m. from 2912130 Basic Biology Slide Set

Basic Biology Slide Set

Twelve slides selected for introductory studies of biology. All 5 kingdoms of life are represented.

<i>Amoeba</i>	Buttercup Root	<i>Hydra</i>
Bacteria	Corn Stem	<i>Paramecium</i>
Blood	Earthworm	Privet Leaf
Bread Mold	<i>Euglena</i>	<i>Spirogyra</i>

2912130 Per set **\$84.00**



Volcanic Ash from 291018 Basic Science Slide Set

Basic Science Slide Set

Six slides selected to introduce students to microscopy. Includes letter "e," cork, salt crystals, dust, volcanic ash, and insect. With study guide.

291018 Per set **\$28.85**

Microscopic Inquiry Set

Introduce students to the basic concepts of microscopy, the structures common in various prokaryotic and eukaryotic organisms, and scientific inquiry. Performing the set's activities, students first observe slides showing examples of bacteria, protist, plant, and animal cells. Next, they create diagrams and write detailed descriptions of what they observed. Finally, students conduct a simulated forensic investigation that combines their microscopy, observation, and scientific-inquiry skills. Includes slides and a detailed teacher's manual with blackline masters for reproducible student guides.

<i>Amoeba</i>	Corn Stem	4 Slides Each of 2
<i>Bacillus</i> Bacteria	Cyanobacteria	"Mystery" Specimens
Cardiac Muscle	<i>Euglena</i>	8 Slides of Another
Cheek Cell	Privet Leaf	"Mystery" Specimen

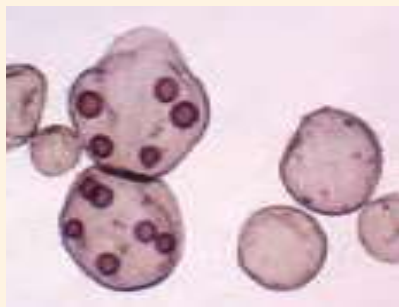
291063 Per set **\$124.00**



291063 Microscopic Inquiry Set



Introductory Slides & Sets



Volvox, w.m.



Life in a Pond Set

Eight slides of typical pond organisms give a condensed view of the multitude of life that can be found in ponds. Includes 1 or more examples of blue-green algae, green algae, protozoans, plants, and animals.

291090 Per set **\$47.00**



Zoea of Crab, w.m. from 291096 Life in the Sea Slide Set

Life in the Sea Slide Set

Ten slides showing examples of organisms commonly found in the sea, including starfish, algae, shark scales, and more.

291096 Per set **\$63.00**



Spirogyra, w.m. from 292148 Common Microorganisms Slide Set

Common Microorganisms Slide Set

Includes 20 slides selected to introduce students to the great diversity of microscopic organisms in our world. Includes examples from 4 kingdoms: monerans (bacteria and blue-green algae), protists (protozoa and algae), fungi (molds and lichen), and animals.

292148 Per set **\$121.50**



291072 Microscopy of the Home Slide Set

Microscopy of the Home Slide Set

Examples of bacteria, fungi, animals, fabrics, food products, and other common items found in most homes are shown with this set of 25 slides. Reveals a world of interesting organisms, shapes, and patterns. Excellent for building students' interest in microscopy.

291072 Per set **\$116.00**



Drosophila, w.m. from 291078 Around the Yard Slide Set

Around the Yard Slide Set

Twelve slides of common things that may be seen around the yard, including dirt, grass, insects, and more.

291078 Per set **\$62.00**



Mixed Diatoms, w.m. from 291060 Nature's Microscopic Beauty Set

Nature's Microscopic Beauty Set

Introduce beginning microscopists to our fascinating world with this set of 12 microscope slides of protists, plants, and animals selected for their beauty and interest. Includes an identification sheet describing the type of organism each slide demonstrates.

291060 Per set **\$63.00**



291114 Hair Comparison Set



Hair Comparison Set

Fifteen slides representing rat, bat, cat, dog, goat, pig, cow, horse, opossum, muskrat, rabbit, and sheep hair. Human gray, straight, and curly hair are also included.

291114 Per set **\$72.00**

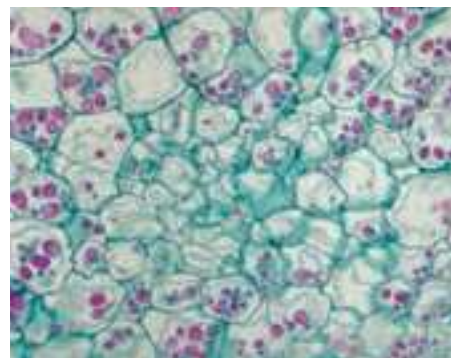


Hydra, w.m. from 291042 Animal, Vegetable, and Mineral Slide Set

Animal, Vegetable, and Mineral Slide Set

Twelve slides selected to introduce the student to the world of animals, plants, and minerals.

291042 Per set **\$64.00**



Potato Tuber, sec. from 291066 Burger and Fries Set

Burger and Fries Set

A microscopic look at America's favorite "fast food." Contains slides demonstrating the source material for the burger, lettuce, tomato, pickle, bun, and french fries. Includes a brief study guide that discusses the biology of this common meal.

291066 Per set **\$34.00**



Introductory Slides & Sets



292111
Typical
Animal
and Plant
Cells
Classroom
Slide Set

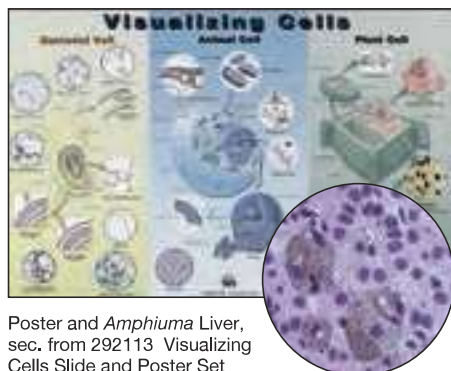
FREE
Digital
Assets



Typical Animal and Plant Cells Slide Set

Five slides demonstrating the basic similarities and differences between animal and plant cells. Includes human cheek cells, *Amphiuma* liver, cork, onion bulb epidermis, and privet leaf. The **Student Set** includes 5 slides and a teacher's manual with reproducible student guide. The **Classroom Set** contains 8 each of the 5 slides plus teacher's manual with reproducible student guide. FREE 1-year access to digital resources that support 3-dimensional instruction included.

292112 Student Set Each **\$25.00**
292111 Classroom Set Each **\$190.00**

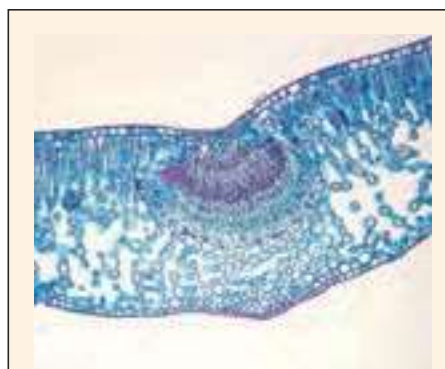


Poster and *Amphiuma* Liver, sec. from 292113 Visualizing Cells Slide and Poster Set

Visualizing Cells Slide and Poster Set

Bacteria, animal, and plant cells are easily compared with this set of 10 slides and poster. Contains examples of cell membrane, cell wall, nucleus, chloroplasts, chromosomes, and mitochondria.

292113 Per set **\$112.00**



Privet Leaf, c.s. from 292106 Animal and Plant Cells Slide Set



Animal and Plant Cells Slide Set

Two slides demonstrating the cell membrane of an animal cell and the cell wall of a plant cell.

292106 Per set **\$12.50**



292104 Discovering Animal Cells Self-Study Unit



Discovering Animal Cells Self-Study Unit

Set includes slides of the 2 most commonly studied examples of animal cells (human cheek cells and *Amphiuma* liver). Also includes a self-study card for each slide featuring a labeled photograph and background information.

292104 Each **\$11.50**



292102 Discovering Plant Cells Self-Study Unit

Discovering Plant Cells Self-Study Unit

Set includes slides of the 2 most commonly studied examples of plant cells (onion bulb epidermis and privet leaf). Also includes a self-study card for each slide featuring a labeled photograph and background information.

292102 Each **\$11.50**



319328 Typical Animal and Plant Cells Kit

Typical Animal and Plant Cells Kit

This kit demonstrates the typical similarities and differences between animal and plant cells. Students prepare slides of their own cheek cells and an onion bulb epidermis. With instructions.

319328 Per kit **\$50.00**



Lily Flower Bud, c.s. from 291062 Microscopic Mystery Set

Microscopic Mystery Set

This set of 6 slides is designed to improve observation and problem-solving skills. Includes a set of 5 reference slides demonstrating basic plant structure (root, stem, leaf, and flower) and a mystery slide to be identified. Students study the reference slides and then examine the mystery slide to determine what sort of structure is represented. Helpful reference information and identity of mystery slide is supplied with set.

291062 Per set **\$35.00**



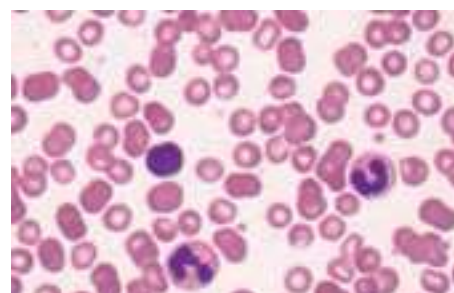
Amphibian Simple Columnar Epithelium, sec. from 311956 Beginner's Animal Tissue Slide Set



Beginner's Animal Tissue Slide Set

These 15 microscope slides have been selected for middle school students and above. They introduce the student to basic animal tissues and help with the identification and understanding of these cell associations. Includes study guide.

311956 Per set **\$98.00**



Human Blood Film, smear from 311968 Beginner's Human Tissue Slide Set

Beginner's Human Tissue Slide Set

The 15 prepared slides in this set give students in middle school and above a basic introduction to the study of human microscopic anatomy. Included are representatives of connective tissues; muscle and bone; blood and the circulatory system; and nervous, digestive, and respiratory systems.

311968 Per set **\$138.00**



Viruses/Prokaryotes Slides & Sets

Viruses/Prokaryotes Slides & Sets

**Discovering Bacteria Types Self-Study Unit**

Slide shows 3 typical bacterial forms in separate smears. Unit includes a self-study card and labeled photograph with descriptive text.

294060 Each **\$12.50**



Bacillus anthracis, w.m. from 292716 Bacterial Pathogens Slide Set

Bacterial Pathogens Slide Set

This reference set of 12 slides demonstrates the bacterial pathogens responsible for many diseases of animals. See Carolina.com for a complete list. Includes a study guide. An excellent resource for instruction at the college level.

292716 Per set **\$98.50**



292696 Monera Kingdom Slide Set

Monera Kingdom Slide Set

Five slides of bacteria and blue-green algae to demonstrate typical characteristics of this prokaryotic group.

292696 Per set **\$35.00**



Bacterial Fat Bodies, w.m. from 292710 Bacteriology Survey Slide Set 3

Bacteriology Survey Slide Sets

These sets are selected to fit several levels of instruction. **Set 1** (6 slides) is suitable for junior high/middle school and high school courses for a basic introduction to bacteria. **Set 2** (12 slides) and **Set 3** (25 slides) are suitable for greater depth of study in high school courses or as reference sets in college courses. Each set demonstrates basic morphology and includes examples of pathogenic bacteria. Each set includes teacher's manual.

292708 Set 1 Each **\$39.00**
292709 Set 2 Each **\$69.00**
292710 Set 3 Each **\$176.00**



Bacterial Flagella—Polar Amphitrichous, w.m. from 292702 Bacterial Structures Slide Set

Bacterial Structures Slide Set

Six slides demonstrating typical bacterial types, flagella, spores, capsules, fat bodies, and bacterial chains.

292702 Per set **\$45.00**



292916 Bacteria and Fungi Slide Set

**Bacteria and Fungi Slide Set**

Nine slides demonstrating bacteria and fungi, organisms that were once believed to be closely related but are now classified in separate kingdoms. Bacteria slides include bacteria types, bacterial flagella, and nitrogen-fixing bacteria. Fungi slides include *Rhizopus*, lichen, cup fungus, yeast, mushroom, and wheat rust.

292916 Per set **\$70.00**



319346 Oral Bacteria Kit

Oral Bacteria Kit ¹

An excellent exercise to build interest in using the microscope and create an awareness of normal mouth bacterial flora. Students prepare permanent mounts of their own stained oral smears. With instructions.

319346 Per kit **\$33.00**



700380 Carolina BioKits: Wright Readi-Stain

Carolina BioKits®: Wright Readi-Stain® ²

For a class of 30 students to stain blood smears and observe white blood cells. No blood required. **Note:** *Shipped only to schools and businesses.*

Kit includes:

30 Unstained Human Blood Smears	2 Human Blood Smear Slides (stained with Wright stain)
2 Bottles Wright Stain	Teacher's Manual and
2 Bottles Wright Buffer	Reproducible Student Guide
15 Blood Smear Cards	

700380 Per kit **\$68.00**

Gram Staining Readi-Stain® BioKit® ³

For a class of 30. Students perform a Gram stain on prepared bacterial slides, make the slides permanent, and observe them. Each slide has a mixture of bacterial forms (coccus, bacillus, and spirillum). Some are Gram positive, others are Gram negative.

319570 Per kit **\$105.00**

Wright Stain Solution Kit ²

For staining white blood cells for observational differentiation. Includes 30 mL of Wright stain, 60 mL of buffer solution, and instructions.

700388 Per kit **\$16.50**

¹ California Proposition 65

² WARNING: Cancer – www.P65Warnings.ca.gov

³ California Proposition 65

³ WARNING: Cancer and Reproductive Harm – www.P65Warnings.ca.gov

² California Proposition 65

² WARNING: Reproductive Harm – www.P65Warnings.ca.gov



Image	Catalog No.	Name and Description	Each	12+ Each
Viruses				
	293866	Tobacco Mosaic Virus Leaf showing diseased tissue, 12 µm	\$6.50	\$6.25
Prokaryotes				
Bacterial Types				
	293946	Bacteria Types, Mixed Smear Bacillus, coccus, spirillum, CF	\$6.45	\$6.20
	293952	Bacteria Types, Separate Smears Bacillus, coccus, spirillum, CF	\$7.25	\$7.00
	293964	Bacteria Types, Separate Smears Bacillus, coccus, spirillum, Gr	\$8.45	\$8.20
	Bacillus			
	293970	Typical, <i>B. megatherium</i>, w.m., CF	\$5.10	\$4.85
	293976	Gram-Positive, <i>B. megatherium</i>, w.m., Gr	\$5.10	\$4.85
	293982	Gram-Negative, <i>Agrobacterium</i>, w.m., Gr	\$4.95	\$4.70
	293988	Gram-Negative and Gram-Positive Mix, w.m., Gr	\$5.75	\$5.50
	Coccus			
	294006	Typical, <i>M. luteus</i>, w.m., CF	\$5.00	\$4.75
	294012	Gram-Positive, <i>M. luteus</i>, w.m., Gr	\$5.10	\$4.85
	294018	Gram-Negative, <i>Neisseria</i>, w.m., Gr	\$5.10	\$4.85
	294024	Gram-Negative and Gram-Positive Mix, w.m., Gr	\$5.95	\$5.70
	Spirillum			
	294048	Typical, <i>R. rubrum</i>, w.m., CF	\$5.10	\$4.85
	294054	Gram-Negative, <i>R. rubrum</i>, w.m., Gr	\$5.00	\$4.75
Bacterial Structures				
	294186	Bacterial Capsules <i>Flavobacterium capsulatum</i> , w.m.	\$9.00	\$8.75
	294198	Bacterial Flagella, Polar Amphitrichous <i>Spirillum volutans</i> , w.m.	\$12.85	\$12.45
	294204	Bacterial Flagella, Peritrichous <i>Proteus vulgaris</i> , w.m.	\$12.15	\$11.75
	294228	Bacterial Spores Large species, w.m.	\$7.65	\$7.40

Image	Catalog No.	Name and Description	Each	12+ Each
Individual Bacteria				
	294372	Yogurt Smear from active culture, shows <i>L. bulgaris</i> and <i>S. lactis</i> , w.m.	\$5.10	
	294444	Bacillus anthracis Causes anthrax, spore-forming bacilli in chains, w.m.	\$9.25	\$9.00
	294474	Bacillus subtilis Hay-infusion organism, bacilli, w.m.	\$5.10	\$4.85
	294486	Borrelia burgdorferi Causes Lyme disease, spirochete, w.m.	\$13.75	\$13.50
	294498	Clostridium botulinum Causes botulism or food poisoning, spore-forming bacilli, w.m.	\$5.90	\$5.65
	294510	Clostridium tetani Causes tetanus or lockjaw, spore-forming bacilli, w.m.	\$7.75	\$7.50
	294522	Corynebacterium diphtheriae Causes diphtheria, bacilli, w.m.	\$6.60	
	294546	Escherichia coli Normally present in intestinal flora, very small bacilli, w.m.	\$5.40	\$5.15
	294550	Helicobacter pylori Causes ulcers and gastric inflammation in humans, spirilla, w.m.	\$11.75	\$11.35
	294552	Haemophilus influenzae Causes bacterial meningitis, bacilli, w.m.	\$7.95	
	294564	Klebsiella pneumoniae Causes pneumonia, bacilli, w.m.	\$5.40	\$5.15
	294570	Lactobacillus acidophilus Used to prepare acidophilus milk, bacilli, w.m.	\$5.10	\$4.85
	301976	Legume Nodule Root nodule of leguminous plant with nitrogen-fixing bacteria, c.s., 12 µm	\$5.40	\$5.15
	294606	Neisseria gonorrhoeae Causes gonorrhea, diplococci, w.m.	\$5.85	\$5.60
	294630	Pseudomonas aeruginosa Found in open wounds, known as "blue pus organism," bacilli, w.m.	\$5.30	\$5.05
	294678	Salmonella typhi Causes typhoid fever, bacilli, w.m.	\$6.20	
	294684	Salmonella typhimurium Causes food poisoning in humans, bacilli, w.m.	\$7.60	\$7.35
	294696	Shigella dysenteriae Causes dysentery, bacilli, w.m.	\$6.45	

Key to Stains:
CF, Carbol Fuchsin; Gr, Gram.

See more individual bacteria slides on the next page.



Viruses/Prokaryotes Slides & Sets

Microscope Slides

Image	Catalog No.	Name and Description	Each	12+ Each
Individual Bacteria (continued)				
	294708	Spirillum volutans Large spirilla, w.m.	\$5.00	\$4.75
	294726	Staphylococcus aureus Causes boils, abscesses, suppuration in wounds, etc., cocci, w.m.	\$5.10	\$4.85
	294732	Staphylococcus epidermidis Pathogenic on vertebrate skin and mucous membranes, cocci, w.m.	\$5.45	
	294738	Streptococcus Shows typical chains of cocci, w.m.	\$5.40	\$5.15
	294756	Streptococcus pneumoniae Causes pneumonia, cocci, w.m.	\$5.75	\$5.50
	294762	Streptococcus pyogenes Causes various human infections, cocci, w.m.	\$5.10	\$4.85
	294774	Treponema Spirochete similar to the syphilis pathogen, w.m.	\$9.90	\$9.65

Image	Catalog No.	Name and Description	Each	12+ Each
Special Preparations				
	294306	Acid-Fast Stained Bacteria <i>Mycobacterium</i> sp., w.m.	\$6.15	\$5.90
	294336	Bacteria and Blood Mixed smear of a bacillus and human blood cells, w.m.	\$8.35	\$8.10
	294348	Bacteria, Yeast, and Blood Mixed smear of a bacillus, yeast, and human blood cells, w.m.	\$10.80	\$10.55
	294354	Oral Smear Lining of cheek, shows epithelial cells and bacteria, w.m.	\$5.00	\$4.75
	294800	Prokaryotic and Eukaryotic Cells, w.m. <i>Nostoc</i> (w.m.) and <i>Amphiuma</i> liver (sec.) mounted together for comparison	\$8.75	\$8.50
Individual Cyanobacteria				
	294906	Mixed Blue-Green Algae Common forms of cyanobacteria for demonstration, w.m.	\$5.95	\$5.70
	294924	Anabaena Filaments with heterocysts and akinetes (spores), w.m.	\$5.10	\$4.85
	294954	Gloeocapsa Gelatinous sheaths surrounding cells and colonies, w.m.	\$5.10	\$4.85
	294996	Nostoc Shows filaments with heterocysts, w.m.	\$4.70	\$4.45
	295002	Oscillatoria Large filament, clearly shows separation discs, w.m.	\$5.10	\$4.85



319900 Carolina Introduction to Microscopy Mat



Carolina® Introduction to Microscopy Mat

This double-sided, durable vinyl mat can effectively introduce your students to microscopy and slide-making techniques. A basic compound microscope is shown on the front; parts are labeled and functions are defined. Clear, concise instructions inform students how to properly focus and magnify specimens. The back features microscope care information and tips, along with the formula for calculating total magnification. Generalized instructions step students through making a dry mount, a wet mount, and using a simple stain; images of each type of slide are shown. Use the mat year after year—it resists spills and wipes clean easily. Size, 11 × 17".

319900 Each \$7.55 10+ Each \$6.75



319734 Basic Slide-Making Set

Basic Slide-Making Set ¹

Includes 72 blank microscope slides, 100 coverslips, slide labels, and 7.5 mL mountant.

319734 Per set \$17.00



¹ California Proposition 65

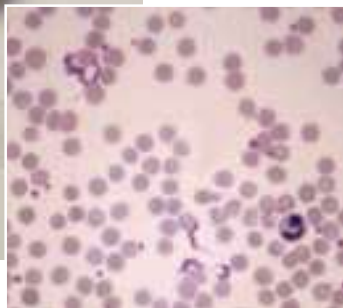
WARNING: Cancer — www.P65Warnings.ca.gov



Protozoa Slides & Sets



293696 Pathogenic Protozoa Slide Set



Trypanosoma cruzi, smear from 293696 Pathogenic Protozoa Slide Set



Amoeba proteus, w.m. from 293484 Protozoan Slide Set



293484 Protozoan Slide Set

Pathogenic Protozoa Slide Set

A selection of pathogenic forms commonly observed in man and domestic animals in 12 slides. Suitable for Advanced Placement® high school and college studies, the set includes *Entamoeba*, *Giardia*, *Plasmodium*, and other pathogenic protozoa.

293696 Per set **\$144.00**

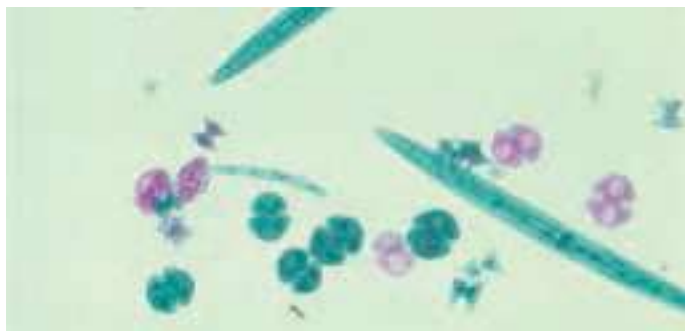
Advanced Placement® is a trademark registered and/or owned by the College Board®, which was not involved in the production of, and does not endorse, this product.



Protozoan Slide Set

Twelve slides selected to familiarize the student with common protozoa. Includes study guide.

293484 Per set **\$74.00**



Mixed Desmids, w.m. from 292422 Beginner's Algae Slide Set

Beginner's Algae Slide Set

Seven slides of common freshwater algae. Includes 1 or more examples of blue-green algae, diatoms, desmids, filamentous green algae, and motile green algae.

292422 Per set **\$37.00**



Oedogonium, w.m. from 292806 Common Algae Slide Set

Common Algae Slide Set

Sixteen slides selected to demonstrate the diversity of organisms from various taxonomic groups commonly called algae. Includes single-celled, colonial, and multicellular forms. Blue-green, golden, green, brown, and red algae are represented.

292806 Per set **\$110.00**

Algae in Water Supplies Slide Set

A reference set of 25 slides demonstrating various types of algae commonly found in surface-water reservoirs. Includes examples of taste- and odor-causing algae, filter-clogging algae, polluted-water algae, clean-water algae, plankton and surface algae, and algae that attach to reservoir walls.

292824 Per set **\$138.00**



292824 Algae in Water Supplies Slide Set



Teacher's Choice



Carolina Exclusive



More Information Available Online



Protozoa Slides & Sets



293490 Protozoan Slide Set

Protozoan Slide Set

Twelve slides introduce the student to a variety of protozoans. Suitable for junior high/middle school, high school, and above. Includes study sheet.

293490 Per set **\$110.00**



295942 Discovering Diatoms Self-Study Unit

Discovering Diatoms Self-Study Unit

Unit consists of a microscope slide showing various freshwater forms and a self-study card featuring a color photomicrograph and descriptive text.

295942 Each **\$11.75**

Image	Catalog No.	Name and Description	Each	12+ Each
Protists				
Mixed				
	295276	Mixed Protozoans Common forms, w.m.	\$8.40	\$8.15
	294918	Water Bloom Typical organisms (<i>Mycrocystis</i> , <i>Anabaena</i> , <i>Coelosphaerium</i>), w.m.	\$6.20	\$5.95
Dinoflagellates				
	295306	Dinoflagellates Flagellates that generally have an outer shell composed of plates, w.m.	\$4.90	\$4.65
Sarcodines (rhizopods)				
	295384	Amoeba proteus Typical specimens in a variety of shapes, w.m.	\$6.90	\$6.65
	295444	Entamoeba coli Cysts Nonpathogenic species, occurs in the human large intestine, smear	\$9.65	\$9.40
	295450	Entamoeba coli Trophozoites Nonpathogenic species, occurs in the human large intestine, smear	\$9.60	\$9.35
	295468	Entamoeba histolytica Cysts Pathogenic species that causes amoebic dysentery, smear	\$12.00	\$11.75
	295474	Entamoeba histolytica Trophozoites Pathogenic species that causes amoebic dysentery, smear	\$11.40	\$11.05
	295486	Mixed Amoebic Infection Mixed forms such as <i>Entamoeba coli</i> , <i>E. histolytica</i> , and <i>Giardia lamblia</i> , smear	\$11.85	\$11.45
Euglenoids				
	295666	Euglena Stained to show general structures, w.m.	\$4.90	\$4.65

Image	Catalog No.	Name and Description	Each	12+ Each
Zoomastigotes				
	295756	Giardia lamblia Cysts Causes giardiasis, common human parasite, smear	\$11.25	\$11.00
	295762	Giardia lamblia Trophozoites Causes giardiasis, common human parasite, smear	\$11.05	\$10.60
	295768	Leishmania donovani Causes kala-azar (an often fatal disease), cultured form, smear	\$11.05	\$10.70
	295780	Termite Flagellates Several genera of large flagellates found in the termite gut, w.m.	\$9.05	\$8.80
	295788	Trichomonas vaginalis Parasitic protozoan that causes trichomoniasis (sex, transmitted infection), smear	\$11.35	\$10.95
	295798	Trypanosoma cruzi Parasitic protozoan that causes Chagas disease, blood smear	\$12.05	\$11.60
	295810	Trypanosoma gambiense Parasitic protozoan that causes West African sleeping sickness, blood smear	\$12.55	\$12.15
	295822	Trypanosoma rhodesiense Parasitic protozoan that causes East African sleeping sickness, blood smear	\$11.95	\$11.50
Diatoms				
	295936	Mixed Diatoms Various freshwater forms, w.m.	\$5.05	\$4.80
	295948	Marine Diatoms Various forms, w.m.	\$4.90	\$4.65
	295966	Freshwater and Marine Diatoms Various mixed forms, w.m.	\$5.30	\$5.05



Image	Catalog No.	Name and Description	Each	12+ Each
Red Algae				
	296290	Polysiphonia Combination Cystocarps, antheridia, and tetraspores, w.m.	\$14.40	\$13.90
	296296	Porphyra Portion of delicate, silk-like thallus, w.m.	\$6.05	\$5.80
Green Algae				
	296356	Mixed Desmids Both filamentous and solitary forms, w.m.	\$5.10	\$4.85
	296368	Mixed Green Algae Common forms, w.m.	\$6.80	\$6.55
	296374	Chara Stonewort, shows sex organs, w.m.	\$6.80	\$6.55
	296386	Chlamydomonas Commonly studied flagellate, w.m.	\$5.15	\$4.90
	296398	Chlamydomonas Commonly studied flagellate, stained to show flagella, w.m.	\$5.60	\$5.35
	296404	Chlorella Non-motile unicellular alga, w.m.	\$5.40	\$5.15
	296476	Hydrodictyon Water net, multinucleate cells that form nets, w.m.	\$5.60	\$5.35
	296500	Oedogonium Macrandrous Filaments with oogonia and antheridia, w.m.	\$7.15	\$6.90
	296518	Pandorina Globular colonies of 8, 16, or 32 cells, each cell has 2 flagella, w.m.	\$5.05	\$4.80
	296542	Scenedesmus Colonies of 4, 8, or 16 cells lined up side by side, w.m.	\$5.10	
	296548	Spirogyra Multiple chloroplasts form, vegetative filaments show cytoplasmic details, w.m.	\$5.15	\$4.90
	296554	Spirogyra Single chloroplast form, vegetative filaments show cytoplasmic details, w.m.	\$5.05	\$4.80
	296560	Spirogyra Scalariform Conjugation Shows vegetative filaments and zygotes, w.m.	\$7.00	\$6.75
	296566	Spirogyra Scalariform Conjugation Shows all stages, w.m.	\$11.00	\$10.65
	296578	Spirogyra Lateral Conjugation Conjugation of adjacent cells in the same filament, w.m.	\$8.00	\$7.75
	296608	Ulva Marine alga, portion of 2-layered thallus, w.m.	\$5.60	\$5.35

Thin sections: Cut at approximately 2 µm (micrometers) as compared to 5 to 10 µm for standard sections. Thin sections show greater clarity of cells and tissues as well as greater detail of cell components. Because of the short depth of field, students should have no problem focusing on thin-section tissues.

Image	Catalog No.	Name and Description	Each	12+ Each
Green Algae (continued)				
	296620	Volvox, Asexual Stages Colonial flagellate with daughter colonies (asexual stages), w.m.	\$6.65	\$6.40
	296626	Volvox, Sexual Stages Colonial flagellate with zygotes (sexual stages), w.m.	\$6.30	\$6.05
	296632	Volvox Colonial flagellate, stained to show flagella, w.m.	\$7.85	\$7.60
Radiolarians				
	296840	Radiolaria Siliceous shells of various species, w.m.	\$5.15	\$4.90
Foraminiferans				
	296870	Foraminifera Calcareous shells of 1 or more globigerinids, w.m.	\$5.75	\$5.50
Ciliates				
	296896	Balantidium coli Cysts Stained to show cilia, nucleus, cyst wall, and contractile vacuoles, smear	\$10.40	\$10.15
	296902	Balantidium coli Trophozoites Stained to show cilia, nucleus, cyst wall, and contractile vacuoles, smear	\$10.55	\$10.30
	296914	Paramecium Commonly studied ciliate, w.m.	\$4.55	\$4.30
	296962	Paramecium caudatum Common ciliate with massive macronucleus and 1 micronucleus, w.m.	\$4.65	\$4.40
	297022	Stentor Trumpet-shaped ciliate, w.m.	\$8.90	\$8.65
	297040	Vorticella Ciliate with elongated, band-shaped macronucleus, w.m.	\$6.70	\$6.45
Apicomplexans (sporozoans)				
	297190	Plasmodium falciparum Causes malignant tertian malaria in humans, in human blood, smear	\$13.30	\$13.05
Myxomycetes (slime molds)				
	297340	Physarum Plasmodium thin sec.	\$6.60	\$6.35
Oomycetes (water molds)				
	297508	Saprolegnia Shows oogonia, antheridia, and zoosporangia, w.m.	\$6.40	\$6.15



Fungi Slides & Sets

Fungi Slides & Sets

**Discovering Mold Types Self-Study Unit**

A slide shows conidia of *Aspergillus* and *Penicillium* and sporangia of *Rhizopus*. Includes a self-study card for each organism featuring a labeled photograph and descriptive text.

297674 Each **\$13.25**



292428 Beginner's Fungi Slide Set

Beginner's Fungi Slide Set

Twelve slides of common saprophytic fungi. Includes examples of phycmycetes (algal-like fungi), ascomycetes (sac fungi), and basidiomycetes (club fungi) that perform the important ecological function of decomposition.

292428 Per set **\$64.00**



Dictyidium from 292922 Slime Molds Slide Set

Slime Molds Slide Set

Includes 5 slides demonstrating the slime mold. Once thought to be closely related to the true fungi, slime molds are now usually classified as protists.

292922 Per set **\$31.00**



292595 Bacteria, Fungi, and Plants Slide Set

Bacteria, Fungi, and Plants Slide Set

Introduce students to a microscopic exploration of bacteria, fungi, and plants with this expertly prepared set of 24 slides and highly detailed color manual. Students can study life in the 3 kingdoms—exploring concepts of life cycles, metabolism, reproduction, photosynthesis, and more! The manual features labeled color images and illustrations outlining a variety of cells, tissues, and structures. This slide set is a fantastic teaching tool for reinforcing concepts addressed in the manual.

Set includes:

Bacteria Types	Dicot Leaf Epidermis
<i>Ocellularia</i>	Corn Leaf
<i>Rhizopus</i>	Smilax Root Monocot
<i>Penicillium</i>	Typical Dicot Root
<i>Aspergillus</i>	Corn Stem
<i>Coprinus</i> Mushroom	Sunflower Stem
Mixed Diatoms	Monocot Flower Bud
<i>Spirogyra</i> Conjugation	Mixed Pollen Grains
<i>Marchantia</i> Archegoniophore	Pine Older Stem
<i>Marchantia</i> Sporophyte	Pine Young Ovate Cone
Fern Archegonia	Pine Staminate Cone
Fern Antheridia	<i>Equisetum</i> Mature Strobilus

292595 Per set **\$153.00**

**Discovering Botany Self-Study Unit**

This set of 25 slides provides a basic selection for the study of botany at the junior high level and above. Contains examples of bacteria, algae, fungi, bryophytes, pteridophytes, gymnosperms, and angiosperms. Includes a self-study card for each slide featuring a labeled photograph and descriptive text.

292596 Per set **\$160.00**

292596 Discovering Botany Self-Study Unit



292588 Botany Study Set

Botany Study Set

This slide set is designed to fit various levels of instruction. It covers the 4 kingdoms (monerans, protists, fungi, and plants) included in the study of botany. Set includes 100 slides. An excellent resource for instruction at the college level.

292588 Per set **\$575.00**



Moss Archegonial Head, l.s. (above) and *Aspergillus* Conidiophores, w.m. (right) from 292588 Botany Study Set

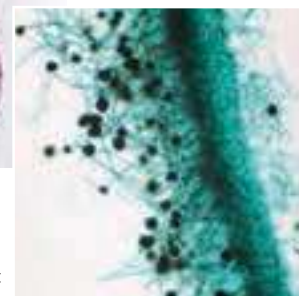




Image	Catalog No.	Name and Description	Each	12+ Each
Fungi				
Basic Fungi Slides				
	297656	Mold Types <i>Penicillium</i> , <i>Aspergillus</i> , and <i>Rhizopus</i> on the same slide, w.m.	\$10.40	\$10.15
	301952	Endotrophic Mycorrhiza Cross section of an orchid root showing symbiotic fungal hyphae, c.s., 12 μm	\$6.45	\$6.20
	301964	Ectotrophic Mycorrhiza Sections of young roots showing symbiotic fungal hyphae, sec., 12 μm	\$6.40	\$6.15
Chytridiomycetes				
	297406	Allomyces Gametophyte Haploid stage, w.m.	\$6.30	\$6.05
	297412	Allomyces Sporophyte Diploid stage, w.m.	\$6.40	\$6.15
Zygomycetes				
	297770	Rhizopus Sporangia Sporangioophores and rhizoids of bread mold, w.m.	\$6.15	\$5.90
	297776	Rhizopus Conjugation Mature zygotes, w.m.	\$6.20	\$5.95
	297782	Rhizopus Combination Sporangia and zygotes on the same slide, w.m.	\$7.95	\$7.70
	297794	Rhizopus Developing Zygosporangia Zygosporangia with suspensors, thin sec.	\$8.05	\$7.80
Ascomycetes (sac fungi)				
	297872	Aspergillus Conidiophores Brown mold, w.m.	\$5.45	\$5.20
	297884	Aspergillus Cleistothecia Brown mold, sec., 12 μm	\$5.40	\$5.15
	297968	Penicillium Blue mold, mycelium and conidiophores with conidia, w.m.	\$6.20	\$5.95
	297974	Penicillium Blue mold, mycelium and conidiophores on citrus fruit, sec., 10–12 μm	\$6.05	\$5.80
	297980	Cup Fungus Apothecium Peziza or related form showing asci containing ascospores, sec., 12 μm	\$5.90	\$5.65
	297992	Saccharomyces Budding Cells Yeast asexual reproduction, w.m.	\$4.85	\$4.60
	298010	Budding Yeast Mixed species, yeast asexual reproduction, w.m.	\$5.90	\$5.65
	298022	Sordaria fimicola Shows perithecia with spores on agar, not intended for spore counts, l.s., 12 μm	\$5.80	\$5.55

Image	Catalog No.	Name and Description	Each	12+ Each
Basidiomycetes (club fungi)				
	298176	Coprinus Mushroom Pileus and gills showing basidia and spores, c.s., 12 μm	\$6.30	\$6.05
	298188	Coprinus Mushroom Shows pileus and basidia, l.s., 10 μm	\$7.40	\$7.15
	298212	Lycoperdon Puffball Section of fruit body showing enclosed basidial layers, sec., 12 μm	\$5.70	
	298224	Puccinia graminis Uredia Wheat rust, shows uredia and uredospore, sec., 12 μm	\$6.90	\$6.65
	298236	Puccinia graminis Aecia Wheat rust on barberry leaf, c.s., 12 μm	\$7.70	
Deuteromycetes (imperfect fungi)				
	298412	Candida albicans Shows yeast-like conidia, causes candidiasis or a yeast infection, w.m.	\$7.45	\$7.20
Lichens				
	298470	Lichen Teased to show algal cells and fungal hyphae, maceration	\$5.55	\$5.30
	298476	Lichen Thallus Shows algal cells surrounded by fungal hyphae, c.s., 12 μm	\$5.60	\$5.35
	298488	Lichen Ascocarps Shows asci with ascospores, sec., 12 μm	\$6.40	\$6.15

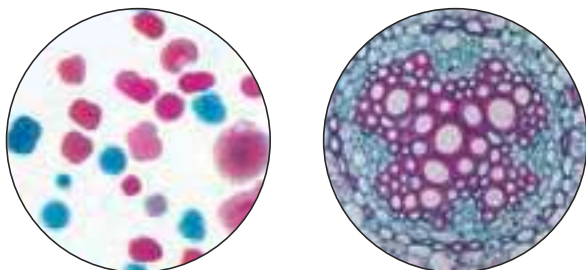
Thin sections: Cut at approximately 2 μm (micrometers) as compared to 5 to 10 μm for standard sections. Thin sections show greater clarity of cells and tissues as well as greater detail of cell components. Because of the short depth of field, students should have no problem focusing on thin-section tissues.



See our selection of living fungi cultures on pages 68–71.



Plant Slides & Sets



Mixed Pollen Grains, w.m. (left) and Buttercup Root, c.s. (right)
from 292416 Beginner's Plant Slide Set



Beginner's Plant Slide Set

Twelve slides selected to give an introductory survey of plant parts and tissues. Includes a study guide to help students learn some of the differences between the 2 major groups of flowering plants and about plant growth and reproduction.

292416 Per set **\$74.00**



292102 Discovering Plant Cells Self-Study Unit



Discovering Plant Cells Self-Study Unit

Set includes slides of the 2 most commonly studied examples of plant cells (onion bulb epidermis and privet leaf). Also includes a self-study card for each slide featuring a labeled photograph and background information.

292102 Each **\$11.50**



Plant Diversity Slide Set for AP® Biology

This set introduces students to the diversity of plant life through informational text, labeled images, and examination of microscope slides. Students gain an understanding of the evolutionary development of plants and diversity within the plant kingdom through the study of plant life cycles, reproductive structures, and structural adaptations. The **Student Set** includes 9 slides of representative species from different divisions of the plant kingdom, a color image booklet, and a teacher's manual with reproducible student sheets. The **Classroom Set** contains 6 sets of the 9 slides, 6 color image booklets, and a teacher's manual for use in a class of up to 24 students working in groups of 4.

292200 Student Set Each **\$63.50**

292201 Classroom Set Each **\$362.00**

AP® is a trademark registered and/or owned by the College Board®, which was not involved in the production of, and does not endorse, these products.

292200 Plant Diversity Student Slide Set for AP Biology



292596 Discovering Botany Self-Study Unit

Discovering Botany Self-Study Unit

This set of 25 slides provides a basic selection for the study of botany at the junior high level and above. Contains examples of bacteria, algae, fungi, bryophytes, pteridophytes, gymnosperms, and angiosperms. Includes a self-study card for each slide featuring a labeled photograph and descriptive text.

292596 Per set **\$160.00**

Botany Atlas and Slide Set

Set includes *A Photographic Atlas for the Botany Laboratory* and microscope slides. Slides have been selected to complement the photographs and drawings in the atlas. Set of 100 slides provides a balanced representation of the major groups of botanical organisms. Designed to accompany any botany text or laboratory manual used in the classroom, the atlas comes with a 3-ring binder so additional information or notes can be added. An excellent resource for instruction at the college level.

292606 Per set **\$630.00**



292606 Botany Atlas and Slide Set

Botany Study Set

This slide set is designed to fit various levels of instruction. It covers the 4 kingdoms (monerans, protists, fungi, and plants) included in the study of botany. Set includes 100 slides. An excellent resource for instruction at the college level.

292588 Per set **\$575.00**



293196 Plant Anatomy Slide Set

Plant Anatomy Slide Set

Twelve slides selected to demonstrate the form, structure, and variability of the tissues comprising the vegetative body of a vascular plant. Includes examples of basic tissues as well as specialized structures such as abscission layer, lenticel, resin duct, root hair, stomate, and velamen. An excellent resource for instruction at the college level.

293196 Per set **\$82.00**

Plant Anatomy Identification Slide Set

Students become "plant detectives" while learning about basic plant structure. They study slides of different plant parts (roots, stems, leaves, and flowers) and use the knowledge gained to identify the part represented on a "mystery" slide. These sets are valuable tools to help students improve their observation and problem-solving skills. **Classroom Set** includes 8 Student Sets and our *Monocot and Dicot Comparison* CD-ROM (item #411322).

293226 Classroom Set with CD-ROM
Each **\$262.00**

293225 Student Set
Each **\$35.00**



293226 Plant Anatomy Identification Classroom Slide Set with CD-ROM

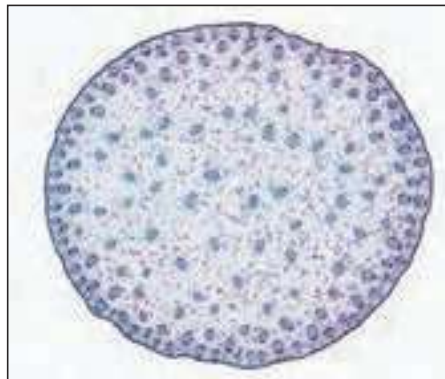


Orchid Aerial Root, w.m. from 293202 Root Slide Set

Root Slide Set

Twelve slides selected to explore the various forms and functions of the root. Root structure is demonstrated in pteridophyte, gymnosperm, and angiosperm plants. Other topics covered by the set include lateral root origin, root hairs, mycorrhizae, mitosis in root tips, and comparison of air, water, and soil roots.

293202 Per set **\$80.00**



Corn Stem, c.s. from 293208 Stem Slide Set

Stem Slide Set

Five slides showing basic stem structure in flowering plants. Illustrates the differences between monocots and dicots as well as herbaceous and woody stems.

293208 Per set **\$35.00**



Venus Flytrap Leaf, c.s. from 293214 Leaf Slide Set

Leaf Slide Set

Twelve slides showing leaf structure in flowering plants. Illustrates the differences between monocots and dicots as well as hydrophytic, mesophytic, and xerophytic leaves.

293214 Per set **\$75.00**

Flowers, Fruits, and Seed Slide Set

Twenty-five slides demonstrating the form, structure, and variability in reproductive structures of flowering plants. Includes both cross and longitudinal sections of several floral patterns. Fruit types illustrated are berry, capsule, pepo, and pome. Several types of seed demonstrate embryonic structures. Includes examples of both monocots and dicots. An excellent resource for instruction at the college level.

293220 Per set **\$165.00**

Shepherd's Purse (*Capsella*) Mature Embryo, I.s. from 293220 Flowers, Fruits, and Seed Slide Set

Discovering Onion Mitosis Self-Study Unit

Slide shows all stages of mitosis. Unit includes a self-study card featuring labeled photographs and descriptive text.

302504 Each **\$13.25**



Teacher's Choice



Carolina Exclusive

More Information
Available Online



Plant Slides & Sets

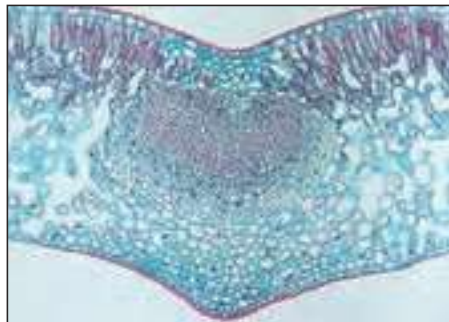


Corn Grain, l.s., from 292458 Beginner's Monocot Slide Set

Beginner's Monocot Slide Set

Six slides demonstrating the basic form and structure of monocot plants. Includes sections of typical root, root tip, stem, leaf, flower, and embryo. With study sheet.

292458 Per set **\$36.00**



Typical dicot leaf from 292452 Beginner's Dicot Slide Set

Beginner's Dicot Slide Set

Five slides demonstrating the basic form and structure of dicot plants. Includes sections of typical root, stem, leaf, flower, and embryo. With study sheet.

292452 Per set **\$30.00**

Monocot and Dicot Comparison Slide/CD-ROM Set

Includes 12 slides and our *Monocot and Dicot Comparison* CD-ROM (item #411322). Slides of roots, stems, leaves, leaf epidermises, flower buds, and seed complement images on CD-ROM. A great tool for

helping students understand the differences and similarities between these 2 groups of flowering plants.

292610
Per set
\$128.00



301910 Discovering Monocot and Dicot Roots Self-Study Unit

Discovering Monocot and Dicot Roots Self-Study Unit

Slide shows typical monocot (carrion flower) and dicot (buttercup) roots. Unit includes a self-study card for each featuring labeled photograph and descriptive text.

301910 Each **\$12.75**



303508 Discovering Monocot and Dicot Leaves Self-Study Unit

Discovering Monocot and Dicot Leaves Self-Study Unit

Slide shows typical monocot (corn) and dicot (privet) leaves. Unit includes a self-study card for each featuring a labeled photograph and descriptive text.

303508 Each **\$12.75**



302684 Discovering Monocot and Dicot Stems Self-Study Unit

Discovering Monocot and Dicot Stems Self-Study Unit

Slide shows typical monocot (corn) and dicot (sunflower) stems. Unit includes a self-study card for each featuring a labeled photograph and descriptive text.

302684 Each **\$12.75**

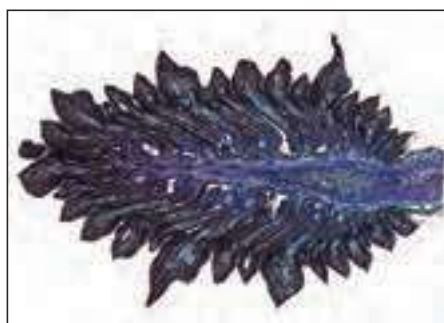


293032 Moss Life Cycle Slide Set

Moss Life Cycle Slide Set

Eleven slides selected to give an in-depth demonstration of the moss life cycle. The form and structure of both gametophyte and sporophyte stages are well represented in this set. With study sheet.

293032 Per set **\$77.00**



Pine Ovulate Cone, l.s., from 293045 Pine Life Cycle Slide Set

Pine Life Cycle Slide Set

This set of 12 slides demonstrates the vegetative and reproductive organs of pine. Contains examples of root, stem, leaf, staminate cone, ovulate cone, and embryo. Includes study guide.

293045 Per set **\$72.00**

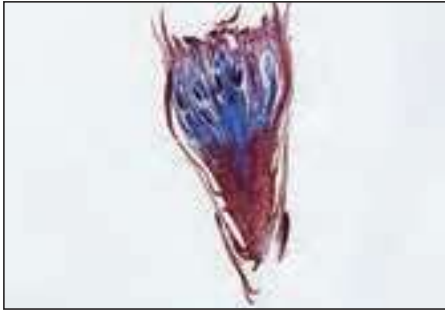


Fern Young Sporophyte, w.m., from 293038 Fern Life Cycle Slide Set

Fern Life Cycle Slide Set

Fifteen slides selected to give an in-depth demonstration of the fern life cycle. The form and structure of both gametophyte and sporophyte stages are well represented in this set. With study sheet.

293038 Per set **\$102.00**

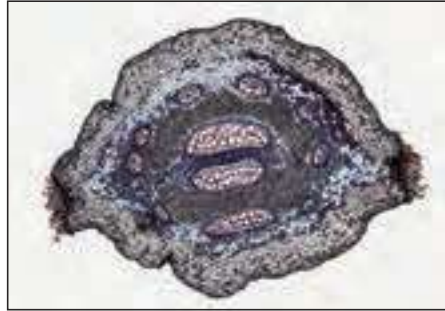


Moss Antheridial Head, I.s. from 292434 Beginner's Moss Life Cycle Slide Set

Beginner's Moss Life Cycle Slide Set

Four slides demonstrating basic stages in the moss life cycle. Includes slides showing protonema, antheridial head, archegonial head, and sporophyte. With study sheet.

292434 Per set **\$25.75**



Pteridium Rhizome, c.s. from 292440 Beginner's Fern Life Cycle Slide Set

Beginner's Fern Life Cycle Slide Set

Four slides showing basic stages in the fern life cycle. Includes gametophytes with antheridia and archegonia, young sporophyte, leaflet with indusium, and rhizome. With study sheet.

292440 Per set **\$30.00**



299590 Discovering Ferns Self-Study Unit

Discovering Ferns Self-Study Unit

Slide shows prothallia with antheridia and archegonia. Unit includes a self-study card featuring labeled photographs and descriptive text.

299590 Each **\$12.25**

Image	Catalog No.	Name and Description	Each	12+ Each
Plants				
Basic Plant Slides				
	301699	Typical Animal and Plant Cells Section of <i>Amphiuma</i> liver and lilac leaf mounted together for comparison, sec., Q	\$9.90	\$9.65
	294800	Prokaryotic and Eukaryotic Cells, w.m. <i>Nostoc</i> (w.m.) and <i>Amphiuma</i> liver (sec.) mounted together for comparison	\$8.75	\$8.50
	302396	Onion Mitosis Most popular mitosis slide, <i>Allium</i> root tips, all mitotic stages, I.s., 10 µm, IH&OG	\$7.50	\$7.25
	301700	Typical Plant Cells Shows nuclei, cytoplasm, and cell walls without chloroplasts, w.m.	\$5.55	\$5.30
	301706	Typical Plant Cells Lilac leaf, shows nuclei, cytoplasm, cell walls, and chloroplasts, thin sec.	\$6.90	\$6.65
	301730	Cork Cells Stem section, c.s., 12 µm	\$6.15	\$5.90
	301736	Collenchyma Tissue Water lily leaf petiole, c.s., 12 µm	\$6.15	\$5.90
	302366	Narcissus Mitochondria Root tip, I.s., 10 µm	\$9.80	\$9.55

Thin sections: Cut at approximately 2 µm (micrometers) as compared to 5 to 10 µm for standard sections. Thin sections show greater clarity of cells and tissues as well as greater detail of cell components. Because of the short depth of field, students should have no problem focusing on thin-section tissues.

Key to Stains:
IH&OG, Iron Hematoxylin and Orange G; Q, Quadruple.

Image	Catalog No.	Name and Description	Each	12+ Each
Liverworts				
	298698	Marchantia Thallus Shows air chambers, pores, and rhizoids, c.s., 12 µm	\$5.30	\$5.05
	298716	Marchantia Gemma Cup Thallus with attached cupule containing gemmae, 12 µm	\$6.60	\$6.35
	298722	Marchantia Antheridiophore With antheridial chambers and antheridia, I.s., 12 µm	\$6.40	\$6.15
	298752	Marchantia Archegoniophore With portion of neck and venter with egg, I.s., 12 µm	\$7.20	\$6.95
	298776	Marchantia Sporophyte Shows spores and elaters, I.s., 12 µm	\$6.35	\$6.10
Mosses				
	298900	Moss Protonema <i>Polytrichum</i> , early filamentous stage of moss gametophyte, w.m.	\$4.90	\$4.65
	299086	Moss Capsule <i>Polytrichum</i> , sporophyte, I.s., 12 µm	\$6.30	\$6.05
	299098	Moss Capsule <i>Polytrichum</i> , sporophyte, shows columella and spores, median I.s., 12 µm, Q	\$14.70	
	298986	Moss Antheridia and Archegonia <i>Mnium</i> , mounted together on 1 slide, w.m.	\$15.40	
	298992	Moss Antheridial Head <i>Polytrichum</i> , shows antheridia, I.s., 12 µm	\$5.65	\$5.40
	299016	Moss Antheridial Head <i>Mnium</i> , shows antheridia, I.s., 12 µm	\$5.60	\$5.35
	299028	Moss Archegonial Head <i>Mnium</i> , with egg, venter, and stalk, I.s., 12 µm	\$9.50	\$9.25

See more plant slides on the next page.



Plant Slides & Sets

Image	Catalog No.	Name and Description	Each	12+ Each
Ferns				
	299230	Fern Prothallium Filamentous young gametophyte, w.m.	\$4.80	\$4.55
	299290	Fern Antheridia and Archegonia Mounted together, selected prothallia, w.m.	\$10.80	\$10.40
	299248	Fern Antheridia Prothallium, w.m.	\$6.45	\$6.20
	299272	Fern Archegonia Prothallium, w.m.	\$6.80	\$6.55
	299356	Fern Young Sporophyte Showing root and leaf, on prothallium, w.m.	\$8.50	\$8.25
	299410	Fern Root <i>Pteridium</i> , shows stele surrounded by sclerenchyma, sec., 12 µm	\$6.25	
	299434	Pteridium Rhizome Mesarch dissected stele, c.s., 12 µm	\$5.90	\$5.65
	299500	Fern Sori Showing sporangia and portion of leaf with attached sori, w.m.	\$6.95	\$6.70
	299518	Fern Sporangia, Mature Leaflet, c.s., 12 µm	\$5.75	\$5.50
	299524	Fern Indusium Leaflet showing indusium with attached stalk and sporangia, 12 µm	\$6.40	\$6.15
Fern Allies				
	299176	Psilotum Aerial Stem Whisk fern stem, c.s., 12 µm	\$6.45	\$6.20
	299182	Psilotum Sporangium Whisk fern, 3-lobed structure with spores, c.s., 12 µm	\$6.20	\$5.95
	299740	Equisetum Mature Strobilus Horsetail fern, shows central axis, sporangioophores, and spores, l.s., 12 µm	\$5.90	\$5.65
	299818	Lycopodium Stem Club moss, c.s., 12 µm	\$5.75	
	299836	Lycopodium Strobilus Club moss, shows sporangia and spores, l.s., 12 µm	\$7.00	\$6.75
	299878	Selaginella Strobilus Shows microspores and megaspores, l.s., 12 µm	\$8.75	\$8.50
	299974	Zamia Young Ovule Shows integument, nucellus, female gametophyte of a cycad, l.s., 12 µm	\$5.65	

Would You Like Slides with That?



No matter how you serve up your instruction, prepared slides can add extra flavor to students' learning experiences. See all of our microscope slides at Carolina.com.

Image	Catalog No.	Name and Description	Each	12+ Each
Gymnosperms (pines)				
	301016	Ginkgo Leaf Maidenhair tree, a living fossil, c.s., 12 µm	\$5.90	
	301226	Pine Root <i>Pinus</i> mature root showing growth rings, c.s., 12 µm	\$5.90	
	301280	Pine Meristematic Stem Young stem with active cambium, c.s., 12 µm	\$6.40	
	301298	Pine Older Stem Mature stem showing growth rings, c.s., 12 µm	\$6.15	\$5.90
	301304	Pine Stems Young and older stems mounted on 1 slide, c.s., 12 µm	\$8.75	
	301376	Pine Two-Needle Leaf Shows vascular tissues, mesophyll, epidermis, and resin canals, c.s., 12 µm	\$6.50	\$6.25
	301448	Pine Mature Pollen Stained to show prothallial cells and tube nucleus, w.m.	\$4.70	\$4.45
	301484	Pine Cones Male and young female cones mounted on 1 slide, l.s., 12 µm	\$8.60	\$8.35
	301430	Pine Young Staminate Cone Shows young cone with sporogenous tissue, l.s., 12 µm	\$6.10	
	301436	Pine Staminate Cone Shows mature pollen, l.s., 12 µm	\$5.55	\$5.30
	301460	Pine Young Ovulate Cone First summer, shows young ovules, l.s., 12 µm	\$6.30	\$6.05
	301478	Pine Ovulate Cone Second summer, shows ovuliferous scales and bracts, l.s., 12 µm	\$6.40	\$6.15
	301520	Pine Ovule Female gametophyte, shows archegonium with egg nucleus, l.s., 12 µm	\$8.00	
	301616	Pine Mature Embryo Shows embryo embedded in female gametophyte, l.s., 12 µm	\$7.85	

Customer Review

"I ordered cheap mitosis slides from another company and received slides that could be made to do in a pinch, but were difficult for students to use to find all the stages of mitosis. I realized I should have ordered from Carolina as I usually did. I re-ordered from Carolina and received top-quality slides that had been quality-checked by someone who obviously knew what they were doing. I've been using Carolina's slides for years and have learned to go for the quality first. It saves time and money in the end!"

High School Teacher



Image	Catalog No.	Name and Description	Each	12+ Each
Angiosperms				
Basic Root Slides				
	301892	Typical Monocot and Dicot Roots Carrion flower and buttercup mounted together for comparison, c.s., 12 µm	\$7.95	\$7.70
	301898	Dicot and Monocot Roots Buttercup and corn mounted together for comparison, c.s., 12 µm	\$8.05	\$7.80
	302480	Smilax Root Typical monocot root anatomy, c.s., 12 µm	\$6.45	\$6.20
	301880	Typical Dicot Root <i>Ranunculus</i> (buttercup), c.s., 12 µm	\$5.55	\$5.30
	301940	Lateral Root Origin Shows origin of branch root from pericycle, c.s., 12 µm	\$7.60	\$7.35
	301952	Endotrophic Mycorrhiza Cross section of an orchid root showing symbiotic fungal hyphae, c.s., 12 µm	\$6.45	\$6.20
	301964	Ectotrophic Mycorrhiza Sections of young roots showing symbiotic fungal hyphae, sec., 12 µm	\$6.40	\$6.15
	301976	Legume Nodule Root nodule of leguminous plant with nitrogen-fixing bacteria, c.s., 12 µm	\$5.40	\$5.15
	302498	Root Hairs Root tip showing root hairs, w.m.	\$7.10	\$6.85
Monocot Roots				
	302480	Smilax Root Typical monocot root anatomy, c.s., 12 µm	\$6.45	\$6.20
	302300	Corn Prop Root <i>Zea</i> , typical monocot root anatomy, c.s., 12 µm	\$5.30	\$5.05
	302312	Corn Root Tip <i>Zea</i> , shows root cap, meristem, and region of elongation, l.s., thin sec.	\$6.60	\$6.35
	302330	Elodea Root Shows lack of conducting tissues in an aquatic plant, c.s., 12 µm	\$5.75	
	302372	Onion Root Tip <i>Allium</i> , shows general structures, c.s., 10 µm	\$6.00	\$5.75
	302378	Onion Root Tip <i>Allium</i> , shows general structures, l.s., 10 µm	\$6.40	\$6.15
	302384	Onion Root Tip <i>Allium</i> , shows general structures with superior fixation, l.s., thin sec.	\$7.60	\$7.35
	302390	Onion Mitosis <i>Allium</i> , root tips showing polar view of mitosis, c.s., 10 µm, IH&OG	\$8.10	\$7.85
	302396	Onion Mitosis Most popular mitosis slide, <i>Allium</i> root tips, all mitotic stages, l.s., 10 µm, IH&OG	\$7.50	\$7.25
	302408	Onion Mitosis <i>Allium</i> , root tip showing all stages of mitosis, l.s., 10 µm, Q	\$8.75	\$8.50

Image	Catalog No.	Name and Description	Each	12+ Each
Angiosperms (continued)				
Monocot Roots (continued)				
	302414	Onion Mitosis <i>Allium</i> , root tip with superior fixation, all mitotic stages, l.s., thin sec.	\$20.20	
	302432	Onion Mitosis <i>Allium</i> root tip, shows all mitotic stages, squash mount, F	\$13.50	
	302474	Orchid Aerial Root Shows velamen, c.s., 12 µm	\$5.90	
	302366	Narcissus Mitochondria Root tip, l.s., 10 µm	\$9.80	\$9.55
Dicot Roots				
	301880	Typical Dicot Root <i>Ranunculus</i> (buttercup), c.s., 12 µm	\$5.55	\$5.30
	302090	Buttercup Mature Root <i>Ranunculus</i> , shows vascular tissues, endodermis, and cortex, c.s., 12 µm	\$6.20	\$5.95
	302072	Basswood Root <i>Tilia</i> , shows structure of woody dicot root, c.s., 12 µm	\$5.25	
	302114	Buttercup Young and Mature Roots <i>Ranunculus</i> , mounted together for comparison, c.s., 12 µm	\$7.75	\$7.50
	302126	Carrot Taproot <i>Daucus</i> , shows storage tissues, c.s., 12 µm	\$5.75	
	302150	Sunflower Root <i>Helianthus</i> , c.s., 12 µm	\$6.30	\$6.05

Key to Stains:

F, Feulgen; H&E, Hematoxylin and Eosin; IH&OG, Iron Hematoxylin and Orange G; Q, Quadruple.

Thin sections: Cut at approximately 2 µm (micrometers) as compared to 5 to 10 µm for standard sections. Thin sections show greater clarity of cells and tissues as well as greater detail of cell components. Because of the short depth of field, students should have no problem focusing on thin-section tissues.

Discovering Monocot and Dicot Roots Self-Study Unit

Slide shows typical monocot (carrion flower) and dicot (buttercup) roots. Unit includes a self-study card for each featuring labeled photograph and descriptive text.

301910 Each \$12.75



301910 Discovering Monocot and Dicot Roots Self-Study Unit

See more plant slides on the next page.



Plant Slides & Sets

Image	Catalog No.	Name and Description	Each	12+ Each
Angiosperms (continued)				
Basic Stem Slides				
	302642	Typical Monocot and Dicot Stems Sunflower and corn mounted together for comparison, c.s., 12 µm	\$8.00	\$7.75
	303296	Corn Stem <i>Zea</i> , typical monocot stem, c.s., 12 µm	\$6.30	\$6.05
	303092	Sunflower Stem <i>Helianthus</i> , typical herbaceous dicot stem, c.s., 12 µm	\$5.90	\$5.65
	302660	Herbaceous and Woody Dicot Stems Sunflower and basswood mounted together for comparison, c.s.	\$8.20	\$7.95
	302678	Abscission Layer Stem and attached leaf petiole showing region of separation, l.s., 12 µm	\$5.90	
Monocot Stems				
	303296	Corn Stem <i>Zea</i> , typical monocot stem, c.s., 12 µm	\$6.30	\$6.05
	303314	Corn Stem <i>Zea</i> , typical monocot stem, c.s. and l.s. mounted together, 12 µm	\$8.30	\$8.05
	303332	Elodea Stem Shows stem of aquatic plant, c.s., 12 µm	\$5.65	
Dicot Stems				
	303092	Sunflower Stem <i>Helianthus</i> , typical herbaceous dicot stem, c.s., 12 µm	\$5.90	\$5.65
	302870	Buttercup Stem <i>Ranunculus</i> , c.s., 12 µm	\$5.40	\$5.15
	302780	Alfalfa Stem <i>Medicago</i> , c.s., 12 µm	\$5.65	\$5.40
	302822	Basswood Three-Year Stem <i>Tilia</i> , typical woody dicot stem, c.s., 12 µm	\$5.90	\$5.65
	302840	Basswood Stem Combination <i>Tilia</i> , 1-yr, 2-yr, 3-yr, and older stems on the same slide, c.s., 12 µm	\$10.80	\$10.55
	302912	Coleus Stem Tip Shows apical meristem, l.s., 12 µm	\$5.80	\$5.55
	302918	Coleus Stem Tip Apical meristem with leaf and axillary bud primordia, median l.s., 12 µm	\$9.00	\$8.75
	302978	Elderberry Lenticel <i>Sambucus</i> stem showing cambium, cork, and lenticel, c.s., 12 µm	\$5.30	
	302984	Geranium Older Stem <i>Pelargonium</i> , shows cork formation, c.s., 12 µm	\$5.80	
	303062	Pumpkin Stem <i>Cucurbita</i> , shows sieve plates, c.s., 12 µm	\$5.70	\$5.45
	303068	Pumpkin Stem <i>Cucurbita</i> , shows sieve plates, l.s., 12 µm	\$6.30	

Image	Catalog No.	Name and Description	Each	12+ Each
Angiosperms (continued)				
Basic Leaf Slides				
	303514	Typical Monocot and Dicot Leaves Corn and privet mounted together for comparison, c.s., 12 µm	\$8.00	\$7.75
	304054	Corn Leaf <i>Zea</i> , typical monocot leaf, c.s., 12 µm	\$5.30	\$5.05
	303838	Privet Leaf <i>Ligustrum</i> , typical mesophytic dicot leaf, c.s., 12 µm	\$6.40	\$6.15
	303520	Dicot Leaf Types Hydrophytic (water lily), mesophytic (privet), xerophytic (rubber tree), c.s.	\$11.25	\$11.00
Leaf Epidermis				
	303668	Monocot and Dicot Leaf Epidermis Mounted together for comparison, w.m.	\$8.20	\$7.95
	303680	Onion Bulb Epidermis <i>Allium</i> , monocot, shows nuclei and cell walls without chloroplasts, w.m.	\$5.15	\$4.90
	303650	Dicot Leaf Epidermis <i>Sedum</i> , dicot, shows stomata with guard cells encircled by subsidiary cells, w.m.	\$6.10	\$5.85
	303662	Monocot Leaf Epidermis Onion (<i>Allium</i>), monocot, shows stomata arranged in rows, w.m.	\$5.80	\$5.55
	303674	Lily Leaf Epidermis <i>Lilium</i> , monocot, w.m.	\$6.45	\$6.20
	303692	Spiderwort Leaf Epidermis <i>Tradescantia</i> , shows trichomes, w.m.	\$5.65	\$5.40
Monocot Leaves				
	304054	Corn Leaf <i>Zea</i> , typical monocot leaf, c.s., 12 µm	\$5.30	\$5.05
	304042	Beach Grass Leaf Xerophytic monocot leaf, c.s., 12 µm	\$5.55	
	304072	Elodea Leaf Simple hydrophytic monocot leaf of an aquatic plant, c.s., 12 µm	\$6.15	
	304066	Elodea Leaf Simple hydrophytic monocot leaf of an aquatic plant, w.m.	\$5.40	\$5.15
	304108	Wheat Leaf <i>Triticum</i> , typical mesophytic monocot leaf, c.s., 12 µm	\$5.80	
	304114	Yucca Leaf Xerophytic monocot leaf, c.s., 12 µm	\$5.80	

Thin sections: Cut at approximately 2 µm (micrometers) as compared to 5 to 10 µm for standard sections. Thin sections show greater clarity of cells and tissues as well as greater detail of cell components. Because of the short depth of field, students should have no problem focusing on thin-section tissues.



Image	Catalog No.	Name and Description	Each	12+ Each
Angiosperms (continued)				
Dicot Leaves				
	303520	Dicot Leaf Types Hydrophytic (water lily), mesophytic (privet), xerophytic (rubber tree), c.s.	\$11.25	\$11.00
	303556	Sun and Shade Leaves Leaves from different light intensities mounted for comparison, c.s., 12 µm	\$7.90	
	303790	Lilac Leaf <i>Syringa</i> , mesophytic leaf, c.s., 12 µm	\$6.40	\$6.15
	303808	Dicot Leaf Paradermal Lilac, shows epidermis, palisade, and spongy mesophyll, thin sec.	\$8.00	
	303814	Maple Leaf <i>Acer</i> , mesophytic leaf, c.s., 12 µm	\$5.60	\$5.35
	303826	Oleander Leaf <i>Nerium</i> , xerophytic, shows sunken stomates, epidermis, cuticle, c.s., 12 µm	\$5.65	\$5.40
	303838	Privet Leaf <i>Ligustrum</i> , typical mesophytic dicot leaf, c.s., 12 µm	\$6.40	\$6.15
	303862	Rubber Tree Leaf <i>Ficus</i> , xerophytic dicot leaf, c.s., 12 µm	\$5.60	
	303868	Sunflower Leaf <i>Helianthus</i> , dicot leaf, c.s., 12 µm	\$6.25	
	303886	Venus Flytrap Leaf <i>Dionaea</i> , shows digestive glands of carnivorous plant, c.s., 12 µm	\$5.80	
	303892	Water Lily Leaf <i>Nymphaea</i> , hydrophytic, shows air spaces and stellate sclerids, c.s., 12 µm	\$5.65	
Flowers				
	304258	Typical Monocot and Dicot Flower Buds Lily (monocot) and <i>Brassica</i> (dicot) mounted together, c.s., 12 µm	\$8.00	
	304520	Typical Monocot Flower Bud Lily, c.s., 12 µm	\$5.90	\$5.65
	304358	Typical Dicot Flower Bud <i>Brassica</i> , c.s., 12 µm	\$5.80	\$5.55
	304382	Dandelion Floral Head <i>Taraxacum</i> , shows a composite floral head, l.s., 12 µm	\$7.15	
	304264	Mixed Pollen Grains Various kinds with multiple stains, w.m.	\$5.25	\$5.00
	304276	Pollen Tubes Mixed species, germinating pollen, w.m.	\$9.00	\$8.75
	304270	Germinated Pollen Mature male gametophyte with pollen tube nucleus and 2 sperm nuclei, w.m.	\$7.75	\$7.50
	304532	Lily Anther <i>Lilium</i> , general structure, c.s., 12 µm	\$5.65	\$5.40

Image	Catalog No.	Name and Description	Each	12+ Each
Angiosperms (continued)				
Flowers (continued)				
	304562	Lily Anther Meiosis <i>Lilium</i> , first meiotic (heterotypic) division, c.s., 12 µm, Q	\$8.75	\$8.50
	304568	Lily Anther Meiosis <i>Lilium</i> , second meiotic (homotypic) division, c.s., 12 µm, Q	\$10.50	\$10.25
	304574	Lily Anther Pollen Tetrads <i>Lilium</i> , 4 haploid daughter cells, c.s., 12 µm, Q	\$7.55	\$7.30
	304586	Lily Anther Mature Pollen Grains <i>Lilium</i> , c.s., 12 µm	\$5.60	\$5.35
	304616	Lily Pollen Tubes <i>Lilium</i> , stigma and style showing pollen tubes, l.s., 10 µm	\$7.00	\$6.75
	304622	Lily Ovule <i>Lilium</i> , general structure, c.s., 12 µm	\$5.65	\$5.40
	304652	Lily Ovule <i>Lilium</i> , first 4-nucleate stage, shows 4 haploid megaspores, c.s., 12–20 µm	\$12.65	
	304688	Lily Ovule <i>Lilium</i> , mature female gametophyte with 7–8 nuclei in series of sections, c.s.	\$21.50	
Fruits & Seeds				
	304864	Persimmon Endosperm <i>Diospyros</i> , demonstrates plasmodesmata, l.s., 12 µm	\$9.20	\$8.95
	304888	Shepherd's Purse Mature Embryo <i>Capsella</i> , l.s., 12 µm	\$6.40	\$6.15
	304900	Tomato Fruit <i>Lycopersicum</i> , young fruit, shows typical berry, c.s., 12 µm	\$5.60	
	305090	Corn Grain <i>Zea</i> , shows embryo, l.s., 12 µm	\$6.95	\$6.70
	305103	Lily Fruit <i>Lilium</i> , shows embryo, c.s., 12 µm	\$5.70	
	305114	Wheat Grain <i>Triticum</i> , shows endosperm, aleurone layer, and grain coat, c.s., 12 µm	\$5.85	
Woods				
	305600	Wood Types Comparison Pine, oak, and basswood mounted together for comparison, c.s., 15 µm	\$11.25	\$11.00
	305246	White Pine Wood <i>Pinus strobus</i> , softwood, cross, radial, and tangential sections, 15 µm	\$10.15	\$9.90
	305504	White Oak Wood <i>Quercus alba</i> , ring-porous wood, cross, radial, and tangential sections, 15 µm	\$12.00	\$11.75
	305528	American Basswood <i>Tilia americana</i> , porous wood, cross, radial, and tangential sections, 15 µm	\$9.15	

Key to Stains: Q, Quadruple.



Animal Slides & Sets

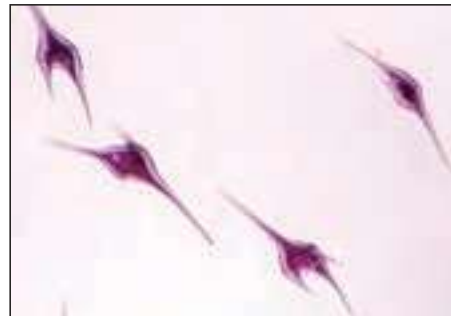
Animal Slides & Sets



Amoeba proteus, w.m. from 293466 Beginner's Zoology Set



Amphioxus Immature Adult, w.m. from 293568 Basic Zoology Survey Slide Set



Dinoflagellates, w.m. from 293574 Comprehensive Zoology Survey Slide Set



Beginner's Zoology Set

Set of 12 slides including *Amoeba*, *Paramecium*, hydra, planaria, *Daphnia*, house fly leg, house fly wing, flea, ant, insect cornea, fish scale, and feather. With teacher's manual.

293466 Per set **\$64.00**

Basic Zoology Survey Slide Set

This set of 50 slides provides a basic selection for the study of zoology at the junior high/middle school level and above. Includes representatives of the protists through the vertebrates.

293568 Per set **\$318.00**



Comprehensive Zoology Survey Slide Set

Includes examples from the protist and animal kingdoms. A comprehensive set of 100 slides, excellent for use in high school and college studies of zoology and biology.

293574 Per set **\$690.00**



292104 Discovering Animal Cells Self-Study Unit



Discovering Animal Cells Self-Study Unit

Set includes slides of the 2 most commonly studied examples of animal cells (human cheek cells and *Amphiuma* liver). Also includes a self-study card for each slide featuring a labeled photograph and background information.

292104 Each **\$11.50**



293465 Animal Body Plan Slide Set

Animal Body Plan Slide Set

Explore different animal body plans with this 7-slide set. It includes examples of multicellular, radial, bilateral acoelomate, pseudocoelomate, protostome, and deuterostome body plans.

293465 Per set **\$56.00**



Rhipicephalus, w.m. from 293519 Don't Bug Me Slide Set



Don't Bug Me Slide Set

A set of 6 slides designed to introduce the beginning student to some of the most commonly encountered 6- and 8-legged "bugs." Includes tick, ant, and our choice of other insects and arachnids.

293519 Per set **\$41.00**

Animal Diversity Slide Set for AP® Biology

Offering students the opportunity to gain an understanding of the animal kingdom, this 10-slide set presents a wide variety of animals representing 7 phyla. By observing the slides, students learn about the anatomical structures and physiology of each animal's organ system. Students also identify structural adaptations and relate them to the animals' diverse behaviors and habitats. After completing the observations, students can describe characteristics shared among the animals and trace the evolutionary patterns seen across the animal kingdom. The **Student Set** includes 10 slides and a teacher's manual. The **Classroom Set** contains materials for a class of 24 students working in groups of 4. It includes 6 slide sets of 10 slides each and a teacher's manual with reproducible student sheets.

293475 Student Set Each **\$77.00**

293476 Classroom Set Each **\$438.00**

AP® is a trademark registered and/or owned by the College Board®, which was not involved in the production of, and does not endorse, these products.



293475 Animal Diversity Student Slide Set for AP Biology



Teacher's Choice



Carolina Exclusive



More Information Available Online



293714 Beginner's Parasitology Slide Set

Beginner's Parasitology Slide Set

Eight slides showing some of the most commonly encountered organisms in the study of parasitology. Includes examples of flatworms, annelids, and a variety of arthropods. Excellent for a first look at parasitology for the junior high/middle school and high school student.

293714 Per set **\$76.00**

General Parasitology Slide Set

A set of 19 microscope slides for parasitology, general zoology, and biology courses. Includes examples of pathogenic protozoa, parasitic worms, and tick and insect vectors of disease.

293708 Per set **\$230.00**



Tick from 293708 General Parasitology Slide Set



Flea from 293690 Hitchin' a Ride Slide Set

Hitchin' a Ride Slide Set

Parasitology studies the relationships between parasites and their host organisms. A parasite completes at least part of its life cycle on or inside its host, living at the host's expense or harming it in some way. This set of 8 slides contains fairly common parasites, many of which may already be familiar to students. Includes tick, flea, louse, bedbug, fluke, pinworm, hookworm, a segment of tapeworm, and a study guide.

293690 Per set **\$74.00**

Customer Review

"My microbiology students love these slides. I created a lab exercise to go along with these slides for our parasitology chapter."

University Biology Professor



293521 Let's Eat! Slide Set

Let's Eat! Slide Set

Insect mouth parts come in 2 basic varieties—biting/chewing and piercing/sucking. This slide set uses 6 common insects to illustrate several variations of these 2 basic types. Includes cockroach, honey bee, plantbug, butterfly, house fly, and mosquito. With study guide.

293521 Per set **\$37.00**



293696 Pathogenic Protozoa Slide Set

Pathogenic Protozoa Slide Set

A selection of pathogenic forms commonly observed in man and domestic animals in 12 slides. Suitable for Advanced Placement® high school and college studies, the set includes *Entamoeba*, *Giardia*, *Plasmodium*, and other pathogenic protozoa.

293696 Per set **\$144.00**

Flatworm and Roundworm Eggs Slide Set

This set of 12 slides includes eggs from most of the important worm parasites encountered in tropical medicine.

293732 Per set **\$106.00**



293726 Medical Parasitology Slide Set

**Medical Parasitology Slide Set**

A comprehensive survey set of 65 microscope slides of human parasites from protozoans to insect vectors. An excellent resource for instruction at the college level.

293726 Per set **\$800.00**

Advanced Placement® is a trademark registered and/or owned by the College Board®, which was not involved in the production of, and does not endorse, these products.



Animal Slides & Sets

Image	Catalog No.	Name and Description	Each	12+ Each
Animals				
Poriferans (sponges)				
Calcareans				
	305830	Grantia <i>Scypha</i> , general structure, c.s., 8–10 µm, H&E	\$6.45	\$6.20
	305842	Grantia <i>Scypha</i> , shows incurrent and radial canals, near-median l.s., 8–10 µm, H&E	\$7.95	\$7.70
	305848	Grantia <i>Scypha</i> , c.s. and l.s. mounted together for comparison, 8–10 µm, H&E	\$10.20	\$9.95
	305854	Grantia <i>Scypha</i> , w.m.	\$5.65	\$5.40
	305860	Grantia Isolated Spicules <i>Scypha</i> , shows spicules, w.m.	\$4.90	\$4.65
Demospongians				
	305962	Gemmules <i>Spongilla</i> , germinal cells protected to survive adverse conditions, w.m.	\$5.75	\$5.50
Cnidarians				
Hydrozoans				
	306040	Hydra General structure, w.m.	\$5.65	\$5.40
	306046	Hydra General structure, c.s., 8–10 µm, H&E	\$8.75	\$8.50
	306052	Hydra General structure, l.s., 8–10 µm, H&E	\$8.00	\$7.75
	306064	Hydra Budding Adult Budding asexual reproduction, w.m.	\$6.15	\$5.90
	306070	Hydra Plain and Budding Both plain and budding specimens on same slide, w.m.	\$8.05	\$7.80
	306094	Hydra with Ovary Sexual stage of reproduction, w.m.	\$8.85	\$8.60
	306100	Hydra Nematocysts Shows specialized cells used for defense and predation, 8–10 µm, H&E	\$8.50	\$8.25
	306118	Hydra c.s. and l.s. mounted together for comparison, 8–10 µm, H&E	\$11.05	\$10.60
	306148	Physalia Tentacle Portuguese man-of-war showing batteries of nematocysts, c.s., 8–10 µm, M	\$7.95	\$7.70
Scyphozoans (jellyfish)				
	306216	Aurelia planula Free-living stage in the development of the jellyfish <i>Aurelia</i> , w.m.	\$9.30	\$9.05
	306222	Aurelia scyphistoma Asexual stage that undergoes strobilation, w.m.	\$9.55	\$9.30


Image	Catalog No.	Name and Description	Each	12+ Each
Platyhelminthes				
Turbellarians (planarians)				
	306312	Planaria Shows general structures of a simple triploblastic animal, w.m.	\$5.50	\$5.25
	306318	Planaria Digestive tract completely colored, w.m.	\$6.70	\$6.45
	306324	Planaria Combination Both plain and injected specimens on 1 slide, w.m.	\$12.00	\$11.75
	306330	Planaria Shows 3 different regions of the body, c.s., 8–10 µm, H&E	\$11.50	\$11.25
Trematodes (flukes)				
	306376	Clonorchis sinensis General body structures, c.s., 8–10 µm, H&E	\$10.00	\$9.75
	306382	Clonorchis sinensis Eggs Shows general characteristics of fluke ova, w.m.	\$6.95	
	306394	Fasciola hepatica Sheep liver fluke, w.m.	\$13.75	
	306406	Fasciola hepatica Eggs Sheep liver fluke eggs, w.m.	\$7.55	\$7.30
	306454	Rediae and Cercariae Life stages of a fluke, w.m.	\$11.50	\$11.15
	306496	Schistosoma mansoni Female Blood fluke that infects the mesenteric veins of humans, w.m.	\$12.75	\$12.35
	306502	Schistosoma mansoni Male Blood fluke that infects the mesenteric veins of humans, w.m.	\$14.15	\$13.65
	306508	Schistosoma mansoni Eggs Blood fluke eggs showing characteristic lateral spine, w.m.	\$9.50	\$9.25
Cestodes (tapeworms)				
	306610	Tapeworm Proglottids Comparison Mature proglottids of <i>Taenia</i> and <i>Dipylidium</i> mounted together, w.m.	\$11.50	\$11.20
	306628	Dipylidium caninum Composite Dog tapeworm, scolex, immature, mature, and gravid proglottids, w.m.	\$21.40	
	306640	Dipylidium caninum Eggs Dog tapeworm eggs, w.m.	\$6.70	\$6.45
	306646	Dipylidium caninum Scolex Dog tapeworm showing scolex with a few proglottids, w.m.	\$11.50	\$11.15
	306652	Echinococcus granulosus Minute tapeworm of carnivores, w.m.	\$14.15	\$13.70
	306658	Echinococcus granulosus Hydatid Cyst Minute tapeworm of carnivores, sec., 8–10 µm, H&E	\$10.45	\$10.20
	306670	Echinococcus granulosus Eggs Eggs of a minute tapeworm of carnivores, w.m.	\$7.70	\$7.45



Image	Catalog No.	Name and Description	Each	12+ Each
Platyhelminthes (continued)				
Cestodes (continued)				
	306724	Taenia pisiformis, Immature Dog tapeworm, immature proglottids, w.m.	\$8.20	
	306736	Taenia pisiformis, Gravid Proglottids Dog tapeworm, mature proglottids, w.m.	\$7.95	\$7.70
	306742	Taenia pisiformis Eggs Dog tapeworm eggs, w.m.	\$8.25	\$8.00
Rotifers				
	306850	Rotifers Freshwater species, w.m.	\$6.60	\$6.35
Nematodes				
	306882	Ancylostoma caninum Female Dog hookworm, w.m.	\$8.95	\$8.70
	306906	Ascaris suum Male Pig roundworm, c.s., 8–10 µm, H&E	\$8.75	\$8.50
	306912	Ascaris suum Female Pig roundworm, c.s., 8–10 µm, H&E	\$9.25	\$9.00
	306918	Ascaris suum Male and Female Pig roundworms mounted together for comparison, c.s., 8–10 µm, H&E	\$12.25	\$11.75
	306948	Ascaris lumbricoides Eggs Human roundworm eggs, w.m.	\$7.00	\$6.75
	306966	Dirofilaria immitis Dog heartworm, blood smear	\$9.70	\$9.45
	306972	Enterobius vermicularis Human pinworm, lives in the cecum, appendix, and parts of the intestine, w.m.	\$10.80	\$10.55
	306978	Enterobius vermicularis Eggs Human pinworm eggs, w.m.	\$7.05	\$6.80
	306996	Necator americanus Eggs Eggs of hookworm commonly infecting humans, w.m.	\$8.25	
	307020	Trichinella spiralis Female Parasitic nematode that causes trichinosis, w.m.	\$9.25	\$9.00
	307032	Trichinella spiralis Encysted Larvae Larvae of parasitic nematode encysted in muscle, causes trichinosis, w.m.	\$10.05	\$9.80
	307044	Trichinella spiralis Encysted Larvae Larvae of parasitic nematode in muscle, causes trichinosis, sec., 8–10 µm, H&E	\$8.05	\$7.80
	307050	Trichuris trichiura Whipworm, infects the cecum and appendix of humans, w.m.	\$24.70	\$23.70
	307056	Trichuris trichiura Eggs Whipworm eggs, barrel-shaped with a shelled projection at either pole, w.m.	\$7.30	\$7.05

Image	Catalog No.	Name and Description	Each	12+ Each
Mollusks				
	307180	Snail Radula Flat mount showing rows of teeth, w.m.	\$7.30	\$7.05
Annelids				
	307246	Earthworm <i>L. terrestris</i> , posterior to clitellum, basic oligochaete slide, c.s., 8–10 µm, H&E	\$6.90	\$6.65
	307264	Earthworm Composite Sections through pharynx, intestine, and head region, c.s., 8–10 µm, H&E	\$11.20	\$10.95
	307300	Nereis Sandworm, c.s., 7–8 µm, H&E	\$7.30	
Arthropods				
Crustaceans				
	307372	Cyclops Shows general structure of a copepod, w.m.	\$5.50	\$5.25
	307390	Daphnia Shows general structure of a cladoceran, w.m.	\$7.85	\$7.60
	307396	Daphnia and Cyclops Two freshwater crustaceans mounted together for comparison, w.m.	\$7.15	\$6.85
	307432	Zoea of Crab Developmental stage preceded by nauplius stage, w.m.	\$6.55	\$6.30
Arachnids				
	307506	Amblyomma americanum Lone star tick, vector of spotted fever in Texas and Oklahoma, w.m.	\$9.55	\$9.30
	307542	Ixodes scapularis Male Deer tick, vector of Lyme disease, w.m.	\$14.70	\$14.35
	307548	Ixodes scapularis Female Deer tick, vector of Lyme disease, w.m.	\$14.85	\$14.55
	307558	Dust Mites Examples of the common dust mite <i>Dermatophagoides</i> , w.m.	\$6.20	\$5.95
	307566	Rhipicephalus sanguineus Brown dog tick, w.m.	\$9.10	
	307584	Tick and Mite Mounted together on the same slide for comparison, w.m.	\$9.55	
Insects				
	307662	Antennae Types Clavate, plumose, lamellate, moniliform, setaceous, aristate, geniculate, w.m.	\$14.80	\$14.40
	307710	House Fly Wing Shows wing and reduced secondary wing or haltere, w.m.	\$5.75	\$5.50

Key to Stains:
H&E, Hematoxylin and Eosin; M, Mallory.

See more animal slides on the next page.



Animal Slides & Sets


Image	Catalog No.	Name and Description	Each	12+ Each
Arthropods (continued)				
Anoplurans (lice)				
	307876	Pediculus humanus capitis Human head louse, w.m.	\$6.55	\$6.30
Hymenopterans (bees & wasps)				
	307986	Hymenoptera Common ant, shows general structures, w.m.	\$5.00	
	308004	Honey Bee Composite Fore- and hindwings, 3rd leg (pollen basket), stinger (poison sac), w.m.	\$15.45	
	308030	WOWBug <i>Melittobia digitata</i> , female, w.m.	\$5.80	\$5.55
Dipterans (true flies)				
	308088	Culex House mosquito, general structures, w.m.	\$9.20	\$8.95
	308094	Culex Male and Female House mosquito, general structures, mounted together for comparison, w.m.	\$15.65	\$15.25
	308112	Mosquito Life Cycle Shows egg, larva, pupa, and adult, w.m.	\$17.50	
	308118	Drosophila Fruit fly, w.m.	\$4.50	\$4.25
	308124	Drosophila Male and Female Fruit flies mounted together for comparison, w.m.	\$7.25	\$7.00
	308136	Musca domestica Head Housefly head, w.m.	\$5.90	\$5.50
	308142	Musca domestica Leg Housefly leg, w.m.	\$4.70	
Siphonapterans (fleas)				
	308170	Ctenocephalides Cat or dog flea, w.m.	\$6.80	\$6.55
	308176	Pulex irritans Human flea, w.m.	\$7.40	\$7.15
Echinoderms				
	308212	Starfish Ray (Arm) Shows general structure, c.s., 7 µm, H&E	\$7.35	
	308218	Starfish Tube Feet Shows general structure, sec., 7 µm, H&E	\$7.40	
	308260	Ascidian Swimming tadpole, w.m.	\$8.50	\$8.25
	308278	Ecteinascidia A tunicate so transparent that the entire anatomy can be seen, w.m.	\$10.00	\$9.75

Image	Catalog No.	Name and Description	Each	12+ Each
Chordates				
Cephalochordates (<i>Amphioxus</i>)				
	308316	Amphioxus Immature Adult Lancelet, w.m.	\$13.50	\$13.15
	308328	Amphioxus Pharyngeal Region Lancelet, c.s., 8–10 µm, H&E	\$7.75	\$7.50
	308346	Amphioxus Composite Four regions (head, pharyngeal, intestinal, caudal), c.s., 8–10 µm, H&E	\$25.00	
Agnathans (jawless fish)				
	308418	Ammonoetes Composite Four regions (head, pharyngeal, mid-body, and caudal), c.s., 8–10 µm, H&E	\$11.60	\$11.15
Amphibians				
	308568	Amphiuma Liver Teacher's choice for showing typical animal cell structures, sec., 8–10 µm, H&E	\$5.40	\$5.15
Fish				
	308470	Cycloid Scale w.m.	\$5.40	
	308476	Ctenoid Scale w.m.	\$5.40	
	308488	Ganoid Scale w.m.	\$5.40	
	308500	Scale Types Placoid, ganoid, cycloid, and ctenoid scales mounted together, w.m.	\$22.50	\$22.00

Key to Stains:
H&E, Hematoxylin and Eosin.



See all of our animal microscope slides at
Carolina.com.



Microslide® Lessons

More titles available at Carolina.com

A Microslide® is a strip of 8 related 35-mm images as photographed through a microscope, with important features highlighted. Each lesson includes 1 Microslide® strip and an explanatory manual about the topic. The needed Microslide® Viewer (item #489700) is sold separately. Price listed is for a single Microslide® strip/lesson. Visit Carolina.com to learn more about each lesson and for boxed sets of 10, 15, and 30 identical lessons.

Catalog No.	Lesson Title	Each
489730A	Cell Structure	\$11.50
489732A	Cells of Your Body	\$11.50
489734A	Cells of Plants	\$11.50
489735A	The Five Kingdoms of Life	\$11.50
489736A	Animal Mitosis	\$11.50
489737A	Plant Mitosis	\$11.50
489738A	Meiosis	\$11.50
489740A	The Virus	\$11.50
489760A	Chromosomes & Genes in Action	\$11.50
489800A	Protozoa	\$11.50
489870A	Photosynthesis	\$11.50
489876A	Harmful Bacteria	\$11.50
489912A	Rocks & Rock-Forming Minerals	\$11.50



Microslide® Viewer

A precision device used to view Microslides® at magnifications from whole mounts to 450,000×. It is not a microscope. Made in the USA of high-impact polystyrene and unconditionally guaranteed against breakage, it uses ambient light and has 2 adjusting knobs for sharp focusing. The 9" H Microslide® Viewer has no painted or removable parts and it is completely washable.

489700 Each \$13.50

Microslide® Viewer Carrying/Storage Case

Holds 10 Microslide® Viewers.

489703 Each \$98.00



489703 Microslide Viewer Carrying/Storage Case

How to Store and Handle Prepared Microscope Slides

By following these guidelines, you'll preserve the quality and extend the life of your microscope slides.

Storage

Keep your prepared microscope slides in good condition.

- Store the slides in a container made for the purpose, and keep the container in a cool, dark location.
- Keep your slides horizontal (flat) with the specimen side up.
- Do not stack slides on top of one another or apply pressure to the cover glass.

Handling and care

Teach students proper slide handling.

- Hold slides by the edges, avoiding the cover glass area.
- Begin viewing a slide using the microscope's lowest magnification (to reduce risk of contact by the objective lens), then switch to a higher magnification if needed.
- Prevent any other objects from coming into contact with a slide (pressure on the cover glass can cause it to break or loosen).
- After viewing a slide, return it to its storage container (leaving the slide on an illuminated stage for extended periods of time can cause fading and other damage).
- If slides get soiled, clean them with soapy water or isopropyl alcohol, but do not immerse or soak the slides in water (this will loosen the cover glass adhesive, causing it to come off and possibly ruin the slide).



Contact us

With proper care, prepared microscope slides can stay in good condition and last a long time. For more information about slide handling and storage, call 800.227.1150 and ask for the Microscope Slides Department.



Genetics Slides & Sets

Image	Catalog No.	Name and Description	Each	12+ Each
Genetics				
Mitosis				
	302396	Onion Mitosis Most popular mitosis slide, <i>Allium</i> root tips, all mitotic stages, I.s., 10 µm, IH&OG	\$7.50	\$7.25
	302414	Onion Mitosis <i>Allium</i> , root tip with superior fixation, all mitotic stages, I.s., thin sec.	\$20.20	
	308922	Ascaris Mitosis All stages of animal mitosis, sec., H	\$15.05	
	308946	Fish Mitosis All stages of mitosis present, 10 µm, H&E	\$18.00	
	308952	Fish Blastodisc General structure, mitotic figures may be present, 10 µm, H&E	\$14.65	\$14.15
Meiosis				
	304562	Lily Anther Meiosis <i>Lilium</i> , first meiotic (heterotypic) division, c.s., 12 µm, Q	\$8.75	\$8.50
	304568	Lily Anther Meiosis <i>Lilium</i> , second meiotic (homotypic) division, c.s., 12 µm, Q	\$10.50	\$10.25
	304574	Lily Anther Pollen Tetrads <i>Lilium</i> , 4 haploid daughter cells, c.s., 12 µm, Q	\$7.55	\$7.30
	308940	Grasshopper Testis Shows spermatogenesis, 8–10 µm, H&E	\$11.25	\$11.00
Chromosomes				
	309066	Drosophila Chromosomes From salivary gland, smear	\$24.95	
	309140	Human Female Chromosomes Blood culture, 46 chromosomes, XX, spread	\$30.50	
	309146	Human Male Chromosomes Blood culture, 46 chromosomes, XY, spread	\$30.50	

Key to Stains:

H, Hematoxylin; H&E, Hematoxylin and Eosin; IH&OG, Iron Hematoxylin and Orange G; Q, Quadruple.

**Visualizing Mitosis Slide and Poster Set****Set includes 2 slides and a poster!**

Review and compare the steps involved in plant and animal mitosis. Includes 2 slides (onion root tip and fish blastodisc), accompanied by the *Mitosis* poster.

308817 Per set **\$53.00**

Fish (left) and onion (right) mitosis

Fish and Onion Mitosis Slide and Study Guide Set
Updated study guide!

Set of 2 slides includes both fish mitosis and onion mitosis. Excellent for comparison of plant and animal mitosis. Includes study guide.

308816 Per set **\$25.75****Ascaris, Fish, and Onion Mitosis Slide and Study Guide Set****Updated study guide!**

Set of 3 slides includes *Ascaris* mitosis, fish mitosis, and onion mitosis and study guide.

308800 Per set **\$44.00****Ascaris and Onion Mitosis Slide Set**

Set of 2 slides includes both *Ascaris* mitosis and onion mitosis. Excellent for comparison of plant and animal mitosis.

308805 Per set **\$26.00****Basic Meiosis Slide Set**

Examine meiosis in a lily anther cross section with this 5-slide set. Slides reveal the developmental stages of pollen from sporogenous tissue to pollen tetrads.

308825 Per set **\$41.00**

Lily Anther, c.s.
from 308825 Basic
Meiosis Slide Set

**Mitosis and Meiosis Study Unit**

Teaching materials for mitosis, meiosis, cellular division, and genetic inheritance—all in 1 convenient unit. These materials complement a variety of teaching styles with the goal of helping all your students achieve mastery of the topics. A recommended learning-station setup for your classroom is also included.

Unit includes:

Set of 6 Microscope Slides
(with examples of mitosis
and meiosis in plant and
animal cells)

Mitosis Poster (item #571203)*Mitosis and Meiosis**Presentation and Image Set*

CD-ROM (item #308828)

Modeling Mitosis and Meiosis

1-Station Kit Manipulatives
(from item #171000)**171170**Per unit **\$110.00**

171170 Mitosis and Meiosis Study Unit

Thin sections: Cut at approximately 2 µm (micrometers) as compared to 5 to 10 µm for standard sections. Thin sections show greater clarity of cells and tissues as well as greater detail of cell components. Because of the short depth of field, students should have no problem focusing on thin-section tissues.



Genetics Slides & Sets



308827 Mitosis and Meiosis Slide Set with CD-ROM

Mitosis and Meiosis Slide Sets

Thirteen microscope slides selected to guide students through the events of cell division. Mitosis is demonstrated in onion root tip and fish blastodisc. Meiosis is demonstrated in lily anther and ovulatory. Includes a study guide. Available with or without a CD-ROM with 43 images made from the slides. An excellent resource for instruction at the college level.

308826 Set without CD-ROM Each **\$245.00**

308827 Set with CD-ROM Each **\$322.00**



Human chromosomes from 308821 Human Sex Indicators Set

Human Sex Indicators Set

Consists of 6 slides selected to teach students the difference in male and female genetic makeup. Includes 1 slide each of female chromosomes, male chromosomes, Barr bodies (female), squamous epithelium (male), blood film (male), and blood film (female).

308821 Per set **\$96.00**



173849 Cellular Gender Kit

Cellular Gender Kit

Introduce your advanced students to cellular gender differences using prepared slides and their own cells. Students look for Barr bodies, "drumsticks," and Y chromosomes. Kit includes male and female blood films, epithelial smears, and chromosomes, as well as blank microscope slides, coverslips, crystal violet stain, teacher's guide, and student guide.

173849 Per kit **\$78.00**



171122 Onion Chromosome Kit

Onion Chromosome Kit ³

Squash Method. Sufficient material for a class of 30. Students grow their own onion root tips in their own containers. Students then kill, stain, and squash the root tips. Squashes can then be observed for chromosomes and mitotic divisions. With instructions. Visit Carolina.com for a complete list of kit materials. **Note:** Onion bulbets only available from October to June. Perishable material; please give use date.

171122 Per kit **\$99.95**



171132 Metaphase Arrest BioKit

Metaphase Arrest BioKit ³

Squash Method. For a class of 30. Students use preserved onion root tips to prepare squashes for microscopic examination of mitotic figures. The root tips have been treated with colchicine to arrest mitosis. **Note:** Perishable material; please give use date.

171132 Per kit **\$99.95**



171142 Onion Mitosis Stain Set

Onion Mitosis Stain Set ³

Includes the solutions necessary for killing, holding, and staining root tips, plus instructions. Visit Carolina.com for a complete list of set materials.

171142 Per set **\$52.50**

**Carolina BioKits®: Onion Mitosis** ³

Squash Method. Prepare your own slides to observe the different phases of mitosis. This is an updated kit from our popular Carolina BioKits® series, designed for a class of 30. Carolina BioKits®: Onion Mitosis includes everything that you need to prepare onion root tips slides. Students stain the root tips, prepare squashes, and observe mitotic phases. The entire exercise can be completed in 1 lab period. **Note:** Perishable material; please give use date.

Kit includes:

Preserved Root Tips	Carnoy Fixative
Microscope Slides	Toluidine Blue
Coverslips and Labels	Carolina Science Online®
Hydrochloric Acid (18%)	Digital Mitosis Lesson
30 Disposable Beakers	Teacher's Manual

171130 Per kit **\$84.00**

Onion Bulblets

For growing root tips. With instructions. Pack of 30 bulblets. **Note:** Limited availability from June to September. Perishable material; please give use date.

171143 Per pack **\$13.70**

**Preserved Onion Root Tips** ²

For mitotic figures. Sufficient material for a class of 30. **Note:** Perishable material; please give use date.

171135 Per vial **\$26.40**

Preserved Onion Root Tips ²

Colchicine-treated. Sufficient material for a class of 30. **Note:** Perishable material; please give use date.

171137 Per vial **\$43.25**



Teacher's Choice



Carolina Exclusive



More Information Available Online

² California Proposition 65

WARNING: Reproductive Harm – www.P65Warnings.ca.gov

³ California Proposition 65

WARNING: Cancer and Reproductive Harm – www.P65Warnings.ca.gov



Embryology Slides & Sets

Image	Catalog No.	Name and Description	Each	12+ Each
Embryology				
Sea Urchin				
	309702	Sea Urchin Development Unfertilized egg through gastrula stage, w.m.	\$9.50	\$9.25
Starfish				
	311126	Starfish Development Shows major developmental stages, w.m.	\$13.25	\$12.90
	311132	Starfish Development Unfertilized egg through gastrula stage, 7 µm, H&E	\$11.95	\$11.70
Frog				
	311236	Frog Uncleaved Egg Just after fertilization, rep. sag. sec., 8–10 µm, H&E	\$10.00	
	311242	Frog Early Cleavage Four to 16 cells, 8–10 µm, H&E	\$9.75	\$9.50
	311248	Frog Late Cleavage Thirty-two to 64 cells, 8–10 µm, H&E	\$9.00	\$8.75
	311254	Frog Blastula Blastocoel surrounded by cells, 8–10 µm, H&E	\$9.50	\$9.25
	311266	Frog Early Yolk Plug Gastrulation after formation of ventral lip, rep. sag. sec., 8–10 µm, H&E	\$9.25	\$9.00
	311272	Frog Late Yolk Plug Yolk plug, blastopore, gastrocoel, ectoderm, and endoderm, 8–10 µm, H&E	\$10.00	\$9.75
	311278	Frog Early Neural Groove Medullary plate with early neural folds and groove, c.s., 8–10 µm, H&E	\$12.50	\$12.25
	311284	Frog Late Neural Groove Pronounced neural folds and grooves, c.s., 8–10 µm, H&E	\$14.00	\$13.75
	311290	Frog Early Neural Tube Neural tube after fusion of neural fold crests, c.s., 8–10 µm, H&E	\$10.70	\$10.45
	311296	Frog Late Neural Tube Ectoderm separated from tube, splanchnic, and somatic mesoderm, c.s., H&E	\$10.95	\$10.70
Chick				
	311502	Chick 18-Hour Notochord and primitive streak present, w.m.	\$15.20	\$14.70
	311508	Chick 18-Hour Entire specimen mounted in series, serial c.s.	\$42.10	
	311520	Chick 24-Hour Many primordial structures are present, w.m.	\$18.55	\$18.05

Image	Catalog No.	Name and Description	Each	12+ Each
Chick (continued)				
	311532	Chick 24-Hour Entire specimen mounted in series, serial c.s.	\$45.80	
	311562	Chick 33-Hour Heart, brain, and diminishing primitive streak are present, w.m.	\$18.05	\$17.55
	311574	Chick 33-Hour Entire specimen mounted in series, serial c.s.	\$49.95	
	311592	Chick 48-Hour Ventral flexion and dextral torsion, w.m.	\$18.30	\$17.80
	311598	Chick 48-Hour Prominent heart, ventral flexion, and dextral torsion, rep. c.s.	\$17.00	
	311604	Chick 48-Hour Entire specimen mounted in series, serial c.s.	\$56.15	
	311634	Chick 72-Hour Limb buds and allantois are beginning to form, w.m.	\$20.35	
	311652	Chick 72-Hour Entire specimen mounted in series, serial c.s.	\$65.00	
	311676	Chick 96-Hour Limb buds and allantois are formed, large eye is prominent, w.m.	\$32.20	
	311688	Chick 96-Hour Entire specimen mounted in series, serial c.s.	\$70.95	
	311700	Chick Composite Representative sections of 33-, 48-, 72-, and 96-hr chicks, rep. sag. sec.	\$25.50	
Pig				
	311834	Pig 8–12 mm Entire specimen mounted in series, serial c.s.	\$184.00	
	311846	Pig 8–12 mm Prominent brain, eyes, heart, and liver, rep. c.s.	\$24.50	
	311852	Pig 8–12 mm Prominent eyes and medial and lateral planes, rep. sag. sec.	\$24.50	

Key to Stains:
H&E, Hematoxylin and Eosin.

Serial cross sections: Show sequential cross-sectional views of an entire specimen, from head to tail. The sections are mounted in rows in consecutive order on the same slide. Depending on the size of the specimen and the thickness of the section, multiple slides may be needed to contain all sections. **Note: Two specimens of the same age (hour) may vary in size. Larger specimens will require more cross-sectional cuts, which may require more microscope slides for mounting all sections. If more than 1 slide is needed to mount all sections, the slide label will be numbered so the sections can be viewed in the proper sequence. The last slide in the sequence will have an "X" beside this number.**



Embryology Slides & Sets

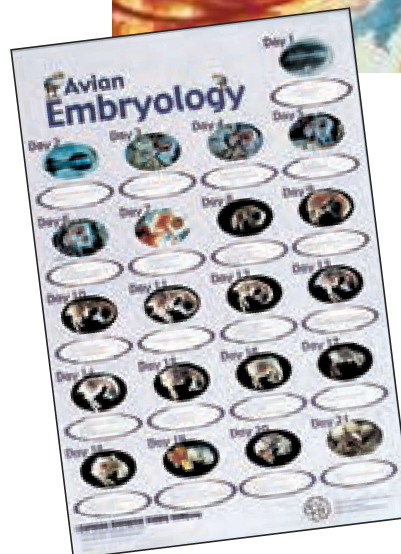
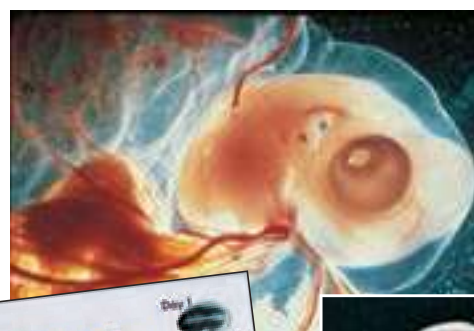


309306 General Embryology Set

**General Embryology Set**

A set of 25 slides designed for vertebrate embryology with special emphasis on the chick. Pig slides are included for comparative study, while starfish slides offer a clear general picture of early holoblastic equal cleavage. Frog development slides show holoblastic unequal cleavage, formation of the blastula, gastrula, yolk plug, and neural plate through neural tube stages. The late neural tube stage gives students a clear picture of primary germ layers.

309306 Per set **\$552.00**



From 227952 Chick Embryo Set with Poster

Beginner's Chick Whole Mount Slide Set

Various stages of chick development are represented in this set of 5 slides.

309336 Per set **\$65.00**



Chick 60- to 70-Hour, w.m. from 309336
Beginner's Chick Whole Mount Slide Set

Chick Embryos

The chick embryos in this life cycle set are of the same quality as those used in making our prepared microscope slides. The embryos are fixed in picosulfuric acid fixative and preserved in 70% alcohol. The **Chick Embryo Set** includes embryos in 6 stages and 1 chick at hatching. The **Chick Embryo Set with Poster** includes the **Avian Embryology Poster**, which illustrates the 21-day development of the chick. **Note:** The embryos and poster are not shipped together; look for them in separate packages.

227950	Chick Embryo Set	Each	\$52.00
227952	Chick Embryo Set with Poster	Each	\$69.00
575116	Avian Embryology Poster	Each	\$18.50



Frog Early Neural Tube, c.s. from 309324 From Egg to Tadpole

From Egg to Tadpole

This set of 6 slides follows the development of the frog from the uncleaved egg through the early tadpole stage.

309324 Per set **\$59.00**



309348 Chick Embryology Set

Chick Embryology Set

A set of 12 slides demonstrating chick development. Includes whole mounts, serial sections, and representative sections of varying ages.

309348
Per set **\$382.00**



Teacher's Choice



Carolina Exclusive



More Information Available Online



Pathology Slides & Sets

Pathology Slides & Sets

Image	Catalog No.	Name and Description	Each	12+ Each
Pathology				
	317338	Human Iron-Deficiency Anemia smear, W	\$10.80	\$10.35
	317374	Human Sickle-Cell Anemia smear, W	\$8.90	\$8.65
	317464	Human Eosinophilia smear, W	\$12.00	
	317726	Human Tuberculosis Lung sec., 7 µm, H&E	\$8.05	\$7.80
	317768	Human Metastatic Melanoma Lung sec., 7 µm, H&E	\$8.20	\$7.95
	317774	Human Metastatic Carcinoma Lung sec., 7 µm, H&E	\$8.20	\$7.95
	317798	Human Adenocarcinoma Lung sec., 7 µm, H&E	\$8.20	\$7.95
	317804	Human Pulmonary Emphysema Lung sec., 7 µm, H&E	\$8.20	\$7.95
	317120	Human Acute Myocardial Infarct Heart sec., 7 µm, H&E	\$7.15	
	317162	Human Atherosclerosis Aorta sec., 7 µm, H&E	\$8.20	
	319070	Human Melanoma Skin sec., 7 µm, H&E	\$10.50	
	298412	Candida albicans Shows yeast-like conidia, causes candidiasis or a yeast infection, w.m.	\$7.45	\$7.20

Key to Stains: H&E, Hematoxylin and Eosin; W, Wright.

Human Pathology Survey Set

A comprehensive collection of 50 slides designed to give an overview of the pathological conditions most often encountered in a general course of study. Tissues from many different body systems are represented. An excellent resource for instruction at the college level.

316980

Per set **\$440.00**



316980 Human Pathology Survey Set



Histopathology of Disease Set

Twenty-four slides include normal and diseased tissues of the same organ. Gives a general overview of some disease processes. An excellent resource for instruction at the college level.

316986 Per set **\$194.00**

Human Acute Myocardial Infarct, sec. from 316986 Histopathology of Disease Set

Effects of Aging Slide Set

This set of 12 slides dramatically illustrates the histological changes that occur in tissues with advancing age. Both younger tissues and the corresponding older tissues are included for comparison.

316983 Per set **\$114.00**



Teacher's Choice



Carolina Exclusive



More Information Available Online

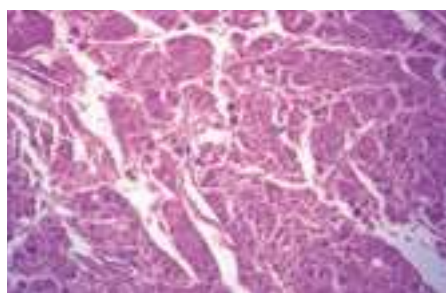


316999 Cardiovascular Diseases Set

Cardiovascular Diseases Set

Eight slides show a variety of pathological conditions affecting the cardiovascular system.

316999 Per set **\$76.00**

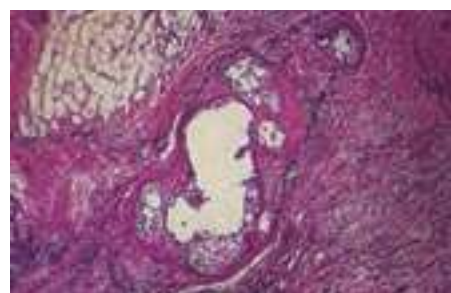


Human Pulmonary Emphysema, sec. from 317010 Human Lung Pathology Set

Human Lung Pathology Set

This special set of 3 slides shows a normal lung, emphysema, and smoker's lung.

317010 Per set **\$26.50**



Human Adenocarcinoma of Lung, sec. from 316992 Malignant Tissues Set

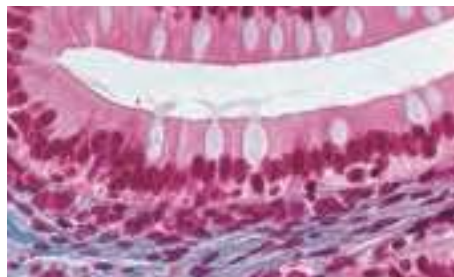
Malignant Tissues Set

The scope of cellular patterns encountered in a variety of cancerous lesions is shown in 10 slides.

316992 Per set **\$89.00**



Histology Slides & Sets

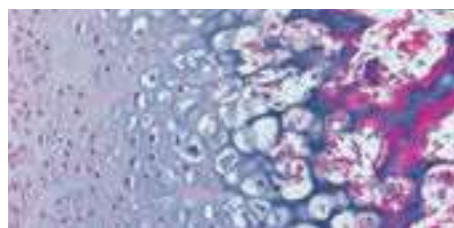


Amphibian Simple Columnar Epithelium, sec. from 311974 Introductory Histology Set

Introductory Histology Set

This set of 25 slides includes representatives of the major tissue types. Ideal for advanced high school courses and beginning college histology courses. Includes study guide.

311974 Per set **\$160.00**



Hyaline Cartilage, sec. from 311992 Comprehensive Medical Histology Set

Comprehensive Medical Histology Set

Advanced anatomy

Providing a microscopic look at the anatomy of animal cells and tissues, this comprehensive collection helps students learn to identify different organs and tissues. The high-quality set of 100 representative (human or comparable mammalian tissue) slides has been recommended by medical schools for instruction at the college, graduate, and medical school levels. All major organ systems and tissues are represented.

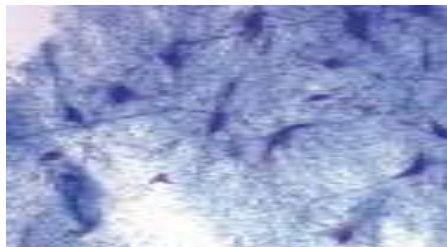
311992 Per set **\$765.00**



Discovering Human Blood Self-Study Unit

Includes a slide showing a smear of normal human blood stained with Wright stain and a self-study card featuring labeled photographs and background information.

313100 Each **\$12.50**

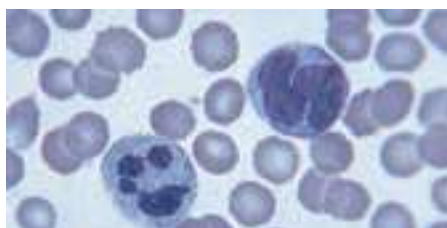


Motor Neuron, smear from 311956 Beginner's Animal Tissue Slide Set

Beginner's Animal Tissue Slide Set

These 15 microscope slides have been selected for middle school students and above. They introduce the student to basic animal tissues and help with the identification and understanding of these cell associations. Includes study guide.

311956 Per set **\$98.00**



Human Blood, smear from 311960 All About Me Slide Set

All About Me Slide Set

This set of 6 slides gives an introductory view of the human body. Represented are bone, blood, hair, cheek cells, muscle, and skin. Includes study guide.

311960 Per set **\$46.00**



312041 Close Encounters with Blood Slide Set

Close Encounters with Blood Slide Set

Fascinate your students with this set of 9 slides of human blood, including 1 slide of normal blood and 8 smears of common blood ailments: *Plasmodium falciparum*, infectious mononucleosis, *Trypanosoma rhodesiense*, chronic granulocytic leukemia, sickle cell anemia, eosinophilia, iron deficiency anemia, and polycythemia. Also includes an informational booklet detailing each blood disease and 15 large mini-posters displaying color photos of each slide's components.

312041 Per set **\$99.95**

Histology Slides & Sets



311968 Beginner's Human Tissue Slide Set

Beginner's Human Tissue Slide Set

The 15 prepared slides in this set give students in middle school and above a basic introduction to the study of human microscopic anatomy. Included are representatives of connective tissues; muscle and bone; blood and the circulatory system; and nervous, digestive, and respiratory systems.

311968 Per set **\$138.00**



311998 Basic Medical Histology Set

Basic Medical Histology Set

This basic collection of 50 slides taken from human or comparable mammalian tissues, although less comprehensive than the Comprehensive Medical Histology Set (item #311992), is an excellent resource for instruction at the high school, college, and graduate levels. Most organ systems and tissues are represented.

311998 Per set **\$395.00**

Forensics Body Fluid Slide Set

Enhance students' understanding of basic techniques applied in forensic science with this inquiry-centered activity set. Based on 3 forensic scenarios, students study prepared microscope slides of unknown body fluid samples and compare them to a visual database of known samples in order to identify the evidence found at a crime scene. Then they examine the morphology of spermatozoa and red blood cells in various species, and distinguish gender based on chromosome analysis and the presence of Barr bodies. Contains a set of 11 prepared microscope slides, divided between 3 activity stations, and a teacher's manual with reproducible student sheets.

311962 Per set **\$99.95**



Histology Slides & Sets



312026 Discovering Connective Tissue Self-Study Unit

Discovering Connective Tissue Self-Study Unit

This set of 4 slides is designed to aid your study of histology. Represented are hyaline cartilage, elastic cartilage, tendon, and compact bone. Set includes a self-study card for cartilage, tendon, and compact bone, each featuring a labeled color photograph with background information.

312026 Per set **\$25.50**

Basic Connective Tissue Set

The major types of connective tissue are represented in this set of 8 slides.

312028 Per set **\$58.00**

Human Connective Tissues Set

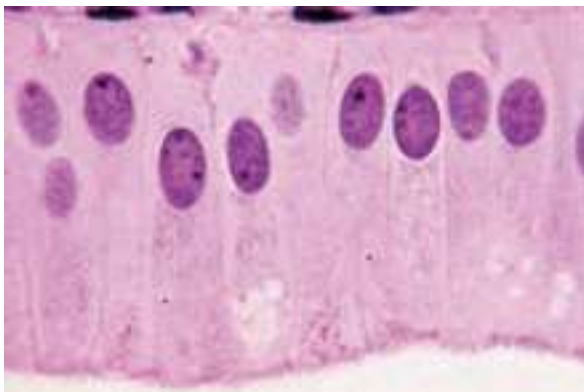
This collection of 11 slides includes slides of mucous tissue, adipose tissue, cartilage types, bone, and tendon.

312040 Per set **\$116.00**

Epithelium Types Set

Eleven slides are included in this expanded version of Discovering Basic Epithelium Types Self-Study Unit (item #312010).

312016 Per set **\$65.00**

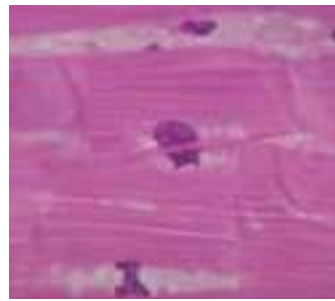


Human Simple Columnar Epithelium, sec, from 312008 Discovering Epithelial Tissues Self-Study Unit

Discovering Epithelial Tissues Self-Study Unit

This set of 11 slides provides a selection of epithelial tissue types suitable for all levels of study. It includes a self-study card for each epithelial type featuring a labeled color photograph and background information.

312008 Per set **\$81.00**



Human Cardiac Muscle, sec, from 312142 Basic Tissue Types Set

Basic Tissue Types Set

For basic study of tissue types. Includes 48 slides in 7 sets.

Basic Epithelium Types Set (item #312010)
Basic Connective Tissue Set (item #312028)
Muscle Types Set (item #312058)
Nerve Tissue Types Set (item #312070)
Blood and Lymph Vessels Set (item #312046)
Gland Types Set (item #312118)
Integument Types Set (item #312088)

312142 Per set **\$294.00**



Mammal Muscle Types, sec, from 312064 Human Muscle Tissues Set

Human Muscle Tissues Set

This collection of 6 slides covers all 3 muscle types.

312064 Per set **\$58.00**

Types of Skin Set

The 8 slides in this set show samples of skin from various regions of the body, including samples of pigmented and nonpigmented skin.

312094 Per set **\$57.00**



312094 Types of Skin Set

Digestive Tract Set

Tissue samples from all major organs of the digestive tract are included in this set of 8 microscope slides.

312106 Per set **\$58.00**

Discovering Intestine Tissues Self-Study Unit

Contains a single slide featuring the 3 regions of the small intestine (duodenum, jejunum, and ileum) and 3 self-study cards (one for each region), each featuring labeled color photographs and background information.

315000 Each **\$14.50**



Basic Anatomy Atlas and Slide Set

Great value!

Set includes 75 slides and *A Photographic Atlas for the Anatomy and Physiology Laboratory*. Slides are specially selected to complement the atlas and represent all major organ groups. The atlas comes with a 3-ring binder so additional information or notes can be added.

311980 Per set **\$600.00**

311980 Basic Anatomy Atlas and Slide Set



Discovering Tissues Self-Study Units

Tissue Types Set

Ideal for a more comprehensive study of tissue types. Includes 54 slides in 7 sets. An excellent resource for instruction at the college level.

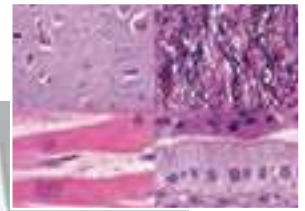
Discovering Basic Epithelium Types Self-Study Unit (item #312010)
Connective Tissue Types Set (item #312034)
Discovering Muscle Types Self-Study Unit (item #312058)
Discovering Nerve Tissue Types Self-Study Unit (item #312070)
Blood and Lymph Vessels Set (item #312046)
Gland Types Set (item #312118)
Integument Types Set (item #312088)

312148 Per set **\$310.00**

**Buy the
set and
save!**



312058 Discovering Muscle Types Self-Study Unit



Discovering Basic Epithelium Types Self-Study Unit

The major types of epithelium are represented in this set of 9 slides.

312010 Per set **\$52.00**

Connective Tissue Types Set

Twelve slides are included in this expanded version of the Basic Connective Tissue Set (item #312028).

312034 Per set **\$78.00**

Discovering Muscle Types Self-Study Unit

Now with self-study cards!

Smooth, skeletal (striated), and cardiac muscles are represented in this set of 3 slides. Includes set of 3 study cards.

312058 Per set **\$20.50**

Discovering Nerve Tissue Types Self-Study Unit

These 8 slides are offered for the study of the mammalian nervous system.

312070 Per set **\$55.00**

Blood and Lymph Vessels Set

These 6 slides include a blood smear, lymph vessel, and other tissues associated with the circulatory system.

312046 Per set **\$37.00**

Gland Types Set

Six slides demonstrating unicellular, lymphoid, exocrine, endocrine, and sebaceous glands.

312118 Per set **\$37.00**

Integument Types Set

These 8 slides include several skin types, mammary gland, and bone.

312088 Per set **\$43.00**

PrimeHisto XE Histology Slide Scanner

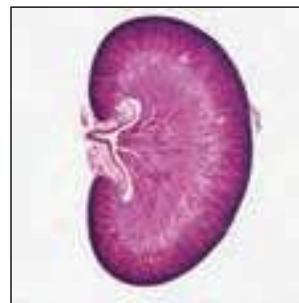
Easily digitize your histology slides using the fast, cost-effective PrimeHisto XE. Simply download the software onto your computer, connect the unit, and you are ready to begin. The PrimeHisto XE scanner comes with *HistoView*, an editing software package that allows you to adjust the quality parameters of the image and save it in various formats such as TIFF and JPEG. Use the simple software interface with PC or Mac® devices (Windows® XP/Vista/7/8/10, Macintosh® OS X [10.5+]).

This scanner can digitize samples mounted on 75 × 25-mm slides with cover slips. The scanning area is 24.3 mm H × 36.5 mm W with a high dynamic range of 3.8 OD. The PrimeHisto XE carries a 10,000-dpi, 48-bit, 5-μm resolution. Digitize your histology samples within seconds for basic high school biology courses all the way up to advanced college histology research.

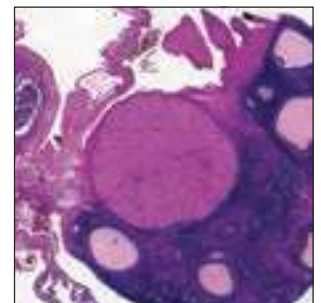
489780 Each **\$655.00**



489780
PrimeHisto XE
Histology Slide
Scanner



Scans of slides 315776,
316030, and 306906 from
489780 PrimeHisto XE
Histology Slide Scanner





Histology Slides & Sets

Image	Catalog No.	Name and Description	Each	12+ Each
Histology				
Cytology				
	312250	Typical Animal Cell, smear Human cheek cells, shows general features of animal cells	\$5.55	\$5.30
	294800	Prokaryotic and Eukaryotic Cells, w.m. <i>Nostoc</i> (w.m.) and <i>Amphiuma</i> liver (sec.) mounted together for comparison	\$8.75	\$8.50
	301699	Typical Animal and Plant Cells Section of <i>Amphiuma</i> liver and lilac leaf mounted together for comparison, sec., Q	\$9.90	\$9.65
	308946	Fish Mitosis All stages of mitosis present, 10 µm, H&E	\$18.00	
	313158	Human Blood Most popular blood slide, smear, W	\$6.20	\$5.95
	308568	Amphiuma Liver Teacher's choice for showing typical animal cell structures, sec., 8–10 µm, H&E	\$5.40	\$5.15
Epithelial Tissues				
	Simple Squamous Epithelium <i>Epithelial tissue consisting of 1 layer of flat cells</i>			
	312324	Amphibian, w.m., H	\$6.45	\$6.20
	312330	Mammal, kidney, 7 µm, H&E	\$6.20	\$5.95
	312336	Mammal, mesothelium, w.m., SH	\$10.70	\$10.30
	312342	Mammal, kidney, thin sec., H&E	\$9.30	\$9.05
	312360	Human, kidney, 7 µm, H&E	\$8.75	\$8.50
	Simple Cuboidal Epithelium <i>A single layer of cube-shaped cells</i>			
	312366	Mammal, kidney, 7 µm, H&E	\$7.00	\$6.75
	312372	Human, thyroid, 7 µm, H&E	\$8.75	\$8.50
	Simple Columnar Epithelium <i>A single layer of columnar-shaped cells</i>			
	312402	Amphibian, small intestine, 7 µm, M	\$7.80	\$7.55
	312420	Mammal, intestine, thin sec., H&E	\$8.20	\$7.95
	312426	Human, gallbladder or intestine, 7 µm, H&E	\$10.05	\$9.80
	Stratified Squamous Epithelium <i>Multiple layers of flat cells</i>			
	312510	Mammal, esophagus, 7 µm, H&E	\$8.00	\$7.75
	312534	Human, cheek, smear, CV	\$6.80	\$6.55

Image	Catalog No.	Name and Description	Each	12+ Each
Epithelial Tissues (continued)				
	312558	Human Stratified Columnar Epithelium Salivary gland, 7 µm, H&E	\$8.20	\$7.95
	312486	Mammal Pseudostratified Ciliated Columnar Epithelium Trachea, 7 µm, H&E	\$7.30	\$7.05
	312462	Mammal Transitional Epithelium Ureter, 7 µm, H&E	\$5.40	\$5.15
Connective Tissue				
	Loose Connective Tissue			
	312668	Mammal Reticular Tissue, lymph node, 7 µm, S	\$9.10	\$8.85
	312686	Mammal Areolar Tissue, mesothelium spread, V	\$7.65	\$7.40
	312692	Mammal Adipose Tissue, 10 µm, H&E	\$5.90	\$5.65
	312728	Human Adipose Tissue, 7 µm, H&E	\$7.40	\$7.15
	Dense, Irregular Connective Tissue			
	312764	Human Skin, shows elastic fibers, 7 µm, V	\$8.20	\$7.95
	Dense, Regular Connective Tissue			
	312788	Mammal Tendon, l.s., 7 µm, H&E	\$9.50	\$9.25
	312794	Mammal Tendon, c.s. & l.s., 7 µm, H&E	\$10.85	\$10.45
	312806	Mammal Muscle-Tendon Junction, l.s., 10 µm, H&E	\$8.75	\$8.50
	312758	Mammal, nuchal ligament, c.s. & l.s., 7 µm, H&E	\$7.15	\$6.90
	312570	Mammal Mesenchyme Fetal pig, 7 µm, H&E	\$6.60	\$6.35
	Cartilage			
	312886	Mammal Hyaline, trachea, 7 µm, H&E	\$6.90	\$6.65
	312910	Mammal Elastic, epiglottis or ear, 7 µm, V	\$12.30	\$11.80
	312922	Mammal Fibrocartilage, 10 µm, H&E	\$9.80	\$9.55
	312946	Human Spongy Bone Shows general structures, 7 µm, H&E	\$18.25	\$17.50

Key to Stains:
CV, Cresyl Violet; **GldC**, Gold Chloride; **H**, Hematoxylin; **H&E**, Hematoxylin and Eosin; **LFB**, Luxol® Fast Blue; **M**, Mallory; **MP**, Mayer's Paracarmine; **O**, Osmium; **Q**, Quadruple; **S**, Silver; **SH**, Silver Hematoxylin; **V**, Verhoeff; **W**, Wright.

Thin sections: Cut at approximately 2 µm (micrometers) as compared to 5 to 10 µm for standard sections. Thin sections show greater clarity of cells and tissues as well as greater detail of cell components. Because of the short depth of field, students should have no problem focusing on thin-section tissues.



Image	Catalog No.	Name and Description	Each	12+ Each
Connective Tissue (continued)				
		Compact Bone		
	312952	Mammal, c.s., 10 µm, H&E	\$7.50	\$7.25
	312958	Mammal, l.s., 10 µm, H&E	\$6.80	\$6.55
	312964	Mammal, ground, c.s.	\$12.30	\$11.80
	313012	Mammal, developing membrane, 7 µm, H&E	\$14.00	\$13.75
		Blood		
	313128	Frog, smear, H&E	\$5.10	\$4.85
	313134	Bird, smear, H&E	\$4.90	\$4.65
	313152	Human, smear, H&E	\$6.30	\$6.05
	313158	Human Blood, most popular blood slide, smear, W	\$6.20	\$5.95
	313170	Mammal Bone Marrow, 7 µm, H&E	\$6.15	\$5.90
	317374	Human Sickle-Cell Anemia, smear, W	\$8.90	\$8.65
Muscle Tissue				
	313448	Mammal Muscle Types All 3 muscle types (skeletal, smooth, cardiac) on 1 slide, 7 µm, H&E	\$10.25	\$10.00
		Skeletal Muscle <i>Shows striations and arrangement of nuclei, fibers, and fibrils</i>		
	313256	Mammal, tongue, 7 µm, H&E	\$6.70	\$6.45
	313316	Human, adult, l.s., 7 µm, H&E	\$7.95	\$7.70
		Smooth Muscle		
	313334	Amphibian, teased isolated fibers, H&E	\$5.90	\$5.65
	313340	Mammal, intestine, c.s., 7 µm, H&E	\$6.15	\$5.90
	313346	Mammal, intestine, c.s. & l.s., 7 µm, H&E	\$6.60	\$6.35
	313358	Human, uterus, 7 µm, H&E	\$8.20	\$7.95
	313364	Human, intestine, l.s., 7 µm, H&E	\$8.20	\$7.95
		Cardiac Muscle		
	313388	Mammal, 7 µm, H&E	\$6.80	\$6.55
	313424	Human, 7 µm, H&E	\$9.00	\$8.75
	313406	Mammal Intercalated Discs, 7 µm, H	\$6.15	\$5.90

Image	Catalog No.	Name and Description	Each	12+ Each
Nervous Tissue				
	313552	Mammal Peripheral Nerve Myelinated, c.s. & l.s., 8 µm, H&E	\$6.15	\$5.90
	313570	Mammal Giant Multipolar Neurons Gray matter of spinal cord, smear, LFB	\$8.15	\$7.90
	313576	Mammal Nerve Fibers Shows nodes of Ranvier, teased isolated fibers, O	\$13.40	\$12.90
	313594	Human Nerve Shows general structures, c.s. & l.s., 7 µm, H&E	\$12.75	\$12.25
		Brain		
	313618	Mammal Cerebrum, 10–12 µm, H&E	\$6.50	\$6.25
	313624	Mammal Cerebrum, shows pyramidal neurons, 10–12 µm, S	\$18.25	\$18.00
	313636	Human Cerebral Cortex, 7–8 µm, H&E	\$6.80	\$6.55
	313660	Mammal Cerebellum, 8 µm, H&E	\$6.15	\$5.90
	313666	Mammal Cerebellum, 8 µm, S	\$10.70	\$10.45
		Spinal Cord <i>Shows gray and white matter</i>		
	313708	Mammal, c.s., 8 µm, H&E	\$7.00	\$6.75
	313726	Mammal, shows motor neurons in gray matter, c.s., 8 µm, S	\$7.80	\$7.55
	313738	Human, c.s., 8 µm, H&E	\$10.05	\$9.80
	313792	Mammal Spinal Ganglion and Nerve Shows general structures, l.s., 7 µm, S	\$6.70	\$6.45
		Nerve Endings (corpuscles)		
	313816	Mammal Meissner's Corpuscle, 7 µm, H&E	\$7.20	\$6.95
	313870	Mammal Vater-Pacini Corpuscle, w.m., MP	\$10.85	
	313864	Mammal Motor Nerve Endings and Plates, w.m., GldC	\$26.00	
		Sensory Organs		
	313830	Mammal Cochlea, shows inner ear with Corti's organ, l.s., 7 µm, H&E	\$14.40	\$13.90
	313842	Mammal Eye, shows general structures, median l.s., 7 µm, H&E	\$13.90	\$13.40

See more histology slides on the next page.



Histology Slides & Sets

Image	Catalog No.	Name and Description	Each	12+ Each
Lymphatic System				
	314250	Mammal Lymphatic Vessel Mesentery, shows valve, w.m., MP	\$11.75	
	314256	Mammal Lymph Node 7 µm, H&E	\$6.30	\$6.05
	314298	Human Palatine Tonsil 7 µm, H&E	\$6.55	\$6.30
	314346	Human Spleen 7 µm, H&E	\$7.85	\$7.60
	314382	Human Thymus 7 µm, H&E	\$8.50	\$8.25
	314388	Human Thymus thin sec., H&E	\$8.50	\$8.25
Integumentary System				
	314486	Frog Skin Shows poison glands, 7 µm, H&E	\$6.10	
	314504	Mammal Skin Shows hair follicles, 8 µm, H&E	\$5.90	\$5.65
	314595	Human Skin with Sweat Glands Human axilla skin, 7 µm, H&E	\$7.50	\$7.25
	314612	Human Scalp Shows hair follicles and shafts, 7 µm, H&E	\$10.75	\$10.25
	314522	Human Nonpigmented Skin 7 µm, H&E	\$7.40	\$7.15
	314528	Human Heavily Pigmented Skin 7 µm, H&E	\$7.25	\$7.00
	314558	Human Plantar Skin Thick skin from bottom of foot, 7 µm, H&E	\$8.15	\$7.90
	314642	Human Lactating Mammary Gland Breast tissue with active gland, 7 µm, H&E	\$12.90	\$12.65
	314636	Human Resting Mammary Gland Breast tissue with inactive gland, 7 µm, H&E	\$8.00	\$7.75
Respiratory System				
	315612	Mammal Trachea Shows hyaline cartilage and pseudostratified epithelium, c.s., 7 µm, H&E	\$7.00	\$6.75
	315618	Mammal Trachea Shows hyaline cartilage and pseudostratified epithelium, thin sec., H&E	\$9.80	\$9.55
	315648	Mammal Lung Shows general structures, 8 µm, H&E	\$6.40	\$6.15
	315670	Human Lung Shows general structures of healthy lung, 7 µm, H&E	\$8.45	\$8.20

Image	Catalog No.	Name and Description	Each	12+ Each
Digestive System				
	Upper GI Tract			
	314758	Mammal Tongue , foliate papillae with taste buds, 7 µm, H&E	\$6.40	\$6.15
	314788	Human Tongue , filiform papillae, 7 µm, H&E	\$8.00	
	314986	Mammal Salivary Glands , parotid, sublingual, submandibular, 7 µm, H&E	\$10.25	\$10.00
	314998	Mammal Esophagus , submucosa and muscularis glands, c.s., 7 µm, H&E	\$6.90	\$6.65
	315058	Mammal Stomach Composite , cardiac, fundic, pyloric, 7 µm, H&E	\$12.25	\$12.00
	315076	Mammal Cardiac Stomach , 7 µm, H&E	\$6.90	\$6.65
	315082	Mammal Fundic Stomach , 7 µm, H&E	\$6.90	\$6.65
	315100	Human Fundic Stomach , 7 µm, H&E	\$7.10	\$6.85
	315112	Mammal Pyloric Stomach , 7 µm, H&E	\$5.65	
	Lower GI Tract			
	315160	Mammal Duodenum , with Brunner's glands, 7 µm, H&E	\$5.80	\$5.55
	315196	Mammal Jejunum , 7 µm, H&E	\$6.15	
	315226	Mammal Ileum , with Peyer's patches, 7 µm, H&E	\$5.80	\$5.55
	315256	Mammal Intestine Composite , duodenum, jejunum, ileum, 7 µm, H&E	\$11.55	\$11.30
	315262	Human Appendix , c.s., 7 µm, H&E	\$8.55	\$8.30
	315274	Mammal Colon , c.s., 7 µm, H&E	\$5.85	\$5.60
	315298	Human Colon , c.s., 7 µm, H&E	\$8.45	\$8.20
	315316	Human Colon , I.s., 7 µm, H&E	\$8.70	\$8.45
	Accessory Organs			
	315358	Mammal Liver , pig, 7 µm, H&E	\$6.30	\$6.05
	315388	Human Liver , 7 µm, H&E	\$7.20	\$6.95
	315424	Human Gallbladder Body , 7 µm, H&E	\$8.65	\$8.40
	315442	Mammal Pancreas , 7 µm, H&E	\$6.25	\$6.00
	315466	Human Pancreas , 7 µm, H&E	\$8.20	\$7.95
	315478	Human Pancreas , thin sec., H&E	\$9.20	\$8.95

Key to Stains:

CF, Carbol Fuchsin; H, Hematoxylin; H&E, Hematoxylin and Eosin; MP, Mayer's Paracarmine; V, Verhoeff.



Image	Catalog No.	Name and Description	Each	12+ Each
Circulatory System				
	313986	Mammal Aorta Shows general structures, c.s., 7 µm, V	\$7.30	
	313998	Human Aorta Shows general structures, c.s., 7 µm, H&E	\$7.00	\$6.75
	314082	Mammal Artery and Vein Shows general structures, c.s., 7 µm, H&E	\$6.10	\$5.85
	314094	Human Artery and Vein Shows general structures, c.s., 7 µm, H&E	\$9.80	\$9.55
Endocrine System				
	316670	Mammal Hypophysis Pituitary gland, 7 µm, H&E	\$8.85	\$8.60
	316700	Human Thyroid Gland 7 µm, H&E	\$7.75	\$7.50
	316718	Mammal Thyroid and Parathyroid Glands 7 µm, H&E	\$7.00	\$6.75
	316750	Mammal Adrenal Gland 7 µm, H&E	\$7.75	\$7.50
Excretory System				
	315770	Mammal Kidney Shows medulla and cortex, c.s., 7 µm, H&E	\$6.70	\$6.45
	315776	Mammal Kidney Shows medulla and cortex, sag. sec., 7 µm, H&E	\$6.60	\$6.35
	315788	Mammal Kidney Blood vessels injected to show glomeruli, c.s., 7 µm, H&E	\$13.00	
	315818	Human Kidney Shows general structures, 7 µm, H&E	\$9.80	\$9.55
	315860	Mammal Bladder, Contracted 7 µm, H&E	\$6.85	\$6.60
Reproductive System—Female				
	Ovary <i>Shows follicles (may or may not have Graafian follicles)</i>			
	315982	Mammal , thin sec., H&E	\$8.80	\$8.55
	316006	Mammal , 7 µm, H&E	\$6.20	\$5.95
	316024	Human , 7 µm, H&E	\$7.95	\$7.70
	Graafian Follicles <i>Shows 1 or more follicles with cumulus oophorus (germ hill) and ovum</i>			
	316012	Mammal , 7 µm, H&E	\$9.55	\$9.30
	316018	Mammal , thin sec., H&E	\$11.95	\$11.70

Reproductive System—Female (continued)				
	316030	Mammal Corpus Luteum 7 µm, H&E	\$7.75	\$7.50
	316102	Human Fallopian Tube c.s., 7 µm, H&E	\$8.00	\$7.75
	316150	Mammal Pregnant Uterus Small mammal uterus containing fetus, 8–10 µm, H&E	\$6.70	
	316174	Human Uterus 7 µm, H&E	\$8.00	\$7.75
	316228	Human Vagina 7 µm, H&E	\$7.00	\$6.75
	316240	Human Placenta 7 µm, H&E	\$5.90	\$5.65
Reproductive System—Male				
	Testis			
	316386	Mammal , 7 µm, H&E	\$7.00	\$6.75
	316434	Human , 7 µm, H&E	\$8.00	\$7.75
	Epididymis <i>Shows tubules containing numerous spermatozoa</i>			
	316464	Mammal , 7 µm, H&E	\$5.90	\$5.65
	316476	Human , 7 µm, H&E	\$6.40	\$6.15
	316500	Human Ductus Deferens c.s., 7 µm, H&E	\$9.25	\$9.00
	316512	Spermatic Cord 8–10 µm, H&E	\$6.70	
	316542	Human Prostate Gland, Young From young adult, 7 µm, H&E	\$7.30	\$7.05
	316548	Human Prostate Gland, Old From older adult, 7 µm, H&E	\$7.60	\$7.35
	316566	Human Penis Shows general structures, c.s., 7 µm, H&E	\$17.00	
	Sperm			
	316572	Frog , smear, CF	\$5.95	\$5.70
	316584	Bull , smear, CF	\$9.25	\$9.00
	316590	Human , smear, H	\$9.30	\$9.05

Thin sections: Cut at approximately 2 µm (micrometers) as compared to 5 to 10 µm for standard sections. Thin sections show greater clarity of cells and tissues as well as greater detail of cell components. Because of the short depth of field, students should have no problem focusing on thin-section tissues.